

NAUKRI JOBSPEAK REPORT

Hiring Trends By City, Industry,
& Experience



2022

Oct

TABLE OF CONTENTS

1
Overview

2
Sectoral
Analysis

3
City
Analysis

4
Work Experience
Analysis

5
Methodology

6
Annexure

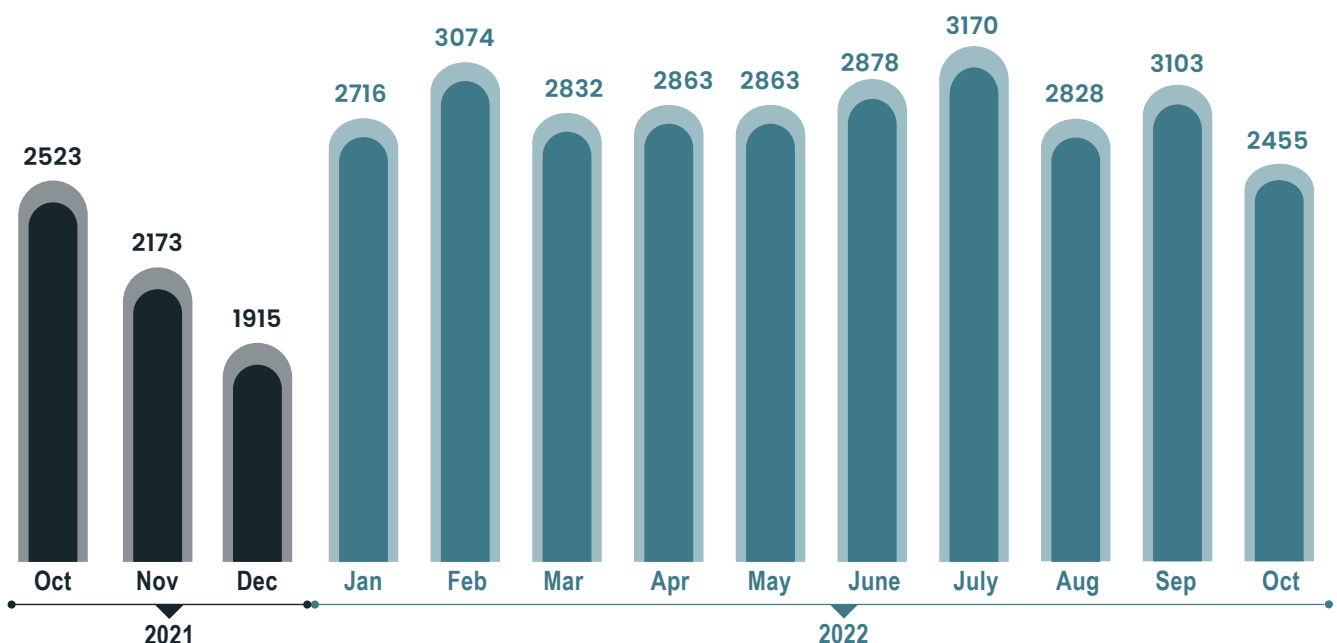




INDEX FOR OCTOBER 2022

Hiring activity slows owing to festivities in Oct'22; Naukri Jobspeak index stays flat vs last year

OVER ALL HIRING TRENDS



- The country's premier hiring index points to festive impact, yet showing resilience with strong growth (+13%) compared to the festive window last year.
- Naukri JobSpeak Index clocked 2455 in Oct'22, however showing an upward trajectory when compared with last year's festive window in Nov'21 where the Index recorded 2173, pointing to sustained hiring, even during a busy festive month.
- Hiring across key industries remains stable, Insurance continues to rule.
- Kolkata leads hiring charts, non-metros remain steady.
- Surge in hiring for leadership roles while other bands stay flat.

Pawan Goyal,

Chief Business Officer,
Naukri.com



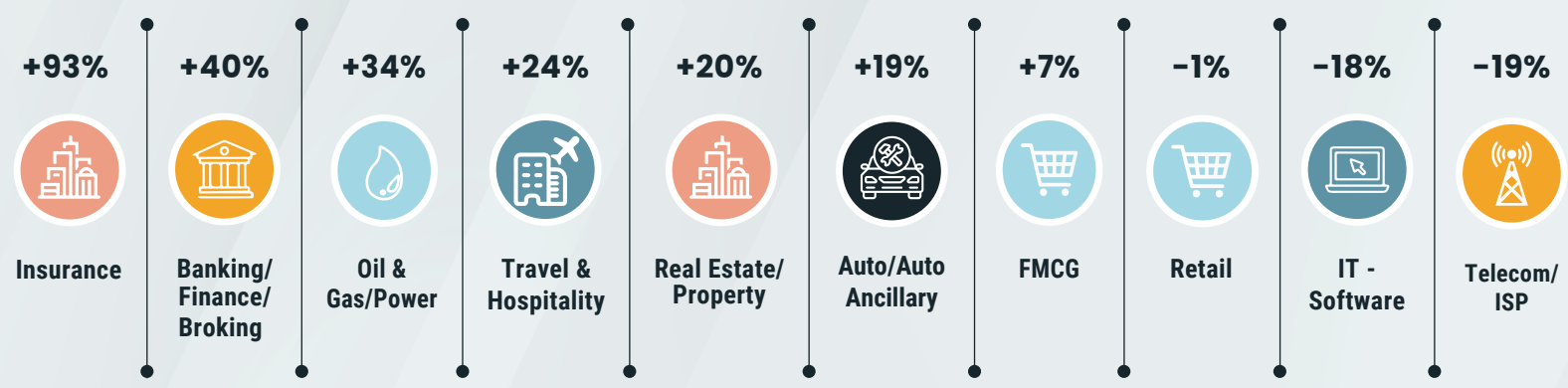
The temporary deceleration in hiring activity was expected given the festive season, however when you compare the data with last year's festive window (Nov'21), the Index is a healthy 13% ahead which is reassuring. It is also interesting to note that most key industries maintained hiring expansion during this month which it likely to only get stronger as year-end approaches.





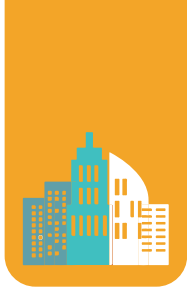
HIRING TRENDS ACROSS INDUSTRIES

- The Insurance sector in India continued to witness phenomenal growth due to an increase in demand for professionals across experience bands.
- The sector registered a significant Y-O-Y growth (+93%) vis-a-vis Oct'21. Other sectors that continued to show upward hiring trends are BFSI (+40%), Oil (+34%), Travel & Hospitality (+24%), Real estate (+20%), and Auto (+19%).
- Hiring in the IT sector slowed down in Oct'22 as there has been a drop (-18%) in Oct'22 vs last year. Apart from IT, other sectors that recorded a notable decline in hiring sentiments include Telecom (-19%) and Health Care (-13%).



Figures are percentage change in Oct-22 over average of Oct-21

Industry*	Oct-21	Nov-21	Dec-21	Jan-22	Feb-22	Mar-22	Apr-22	May-22	June-22	July-22	Aug-22	Sep-22	Oct-22	
IT-Software/Software Services	4686	4155	3334	5370	5560	4983	4656	4711	5069	5872	4881	5283	3825	↓ -18%
BPO/ITES/CRM/Transcription	2044	1771	1567	1987	2468	2458	2659	2617	2600	2587	2325	2619	2131	↑ 4%
Auto/Auto Ancillary	896	787	733	925	1160	1038	1146	1152	1106	1183	1360	1201	1063	↑ 19%
Banking/Financial Services/Broking	2549	2305	2145	2860	3433	3138	3348	3299	3279	3731	3576	4496	3565	↑ 40%
Oil and Gas/Power/Infrastructure/Energy	372	378	338	423	510	449	522	517	491	581	550	606	498	↑ 34%
Telecom/ISP	642	670	374	602	621	563	607	669	622	741	664	685	517	↓ -19%
Insurance	1234	822	829	1291	2042	1541	1553	1946	1761	2124	2200	2479	2382	↑ 93%
Pharma/Biotech/Clinical Research	1836	1654	1747	2169	2429	2117	2108	2078	1908	2081	1871	2094	1736	↓ -5%
Travel & Hospitality	1207	1170	1007	1014	1432	1698	1609	1603	1468	1487	1526	1665	1492	↑ 24%
FMCG/Foods/Beverage	1625	1492	1491	1737	2024	1842	1996	1960	1976	2203	1971	2176	1746	↑ 7%
Education/Teaching/Training	4548	4143	3674	4755	5868	5753	6321	6030	5484	5311	5040	5448	4761	↑ 5%
IT-Hardware & Networking	888	848	725	1006	1181	1338	1027	1045	757	923	856	916	672	↓ -24%
Retail	1587	1441	1300	1758	2004	1795	1992	2055	2042	1865	1621	1849	1578	↓ -1%
Medical/Healthcare/Hospital	6170	5192	3989	5260	6589	6248	6323	6403	5983	6402	6546	6059	5339	↓ -13%

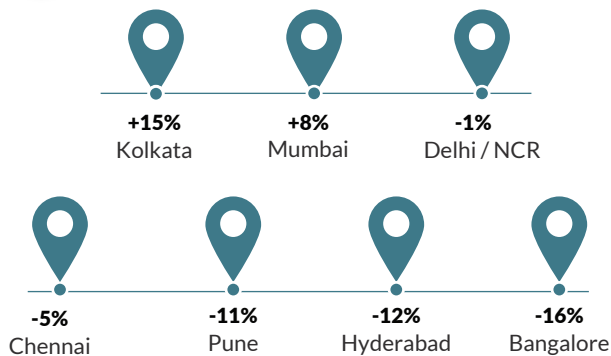


HIRING TRENDS ACROSS CITIES

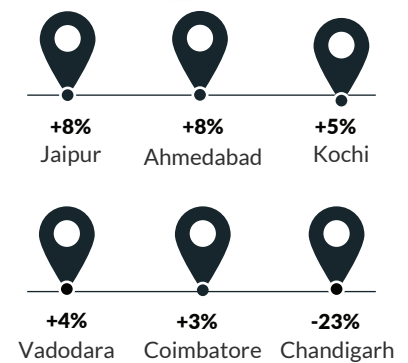
- While Kolkata (+15%) and Mumbai (+8%) continued to grow in hiring activity in Oct'22, Delhi stayed flat with respect to hiring activity vs Oct last year.
- With IT sector showing a decline, the metros of Bangalore (-16%), Hyderabad (-12%) and Pune (-11%) showed decline in hiring activity.
- Amongst non-metros, most key cities exhibited growth in hiring activity, as Jaipur (+8%), Kochi (+5%), Vadodara (+4%), and Coimbatore (+3%) all saw an uptick in demand for white collared professionals.



METRO CITIES



Emerging Cities



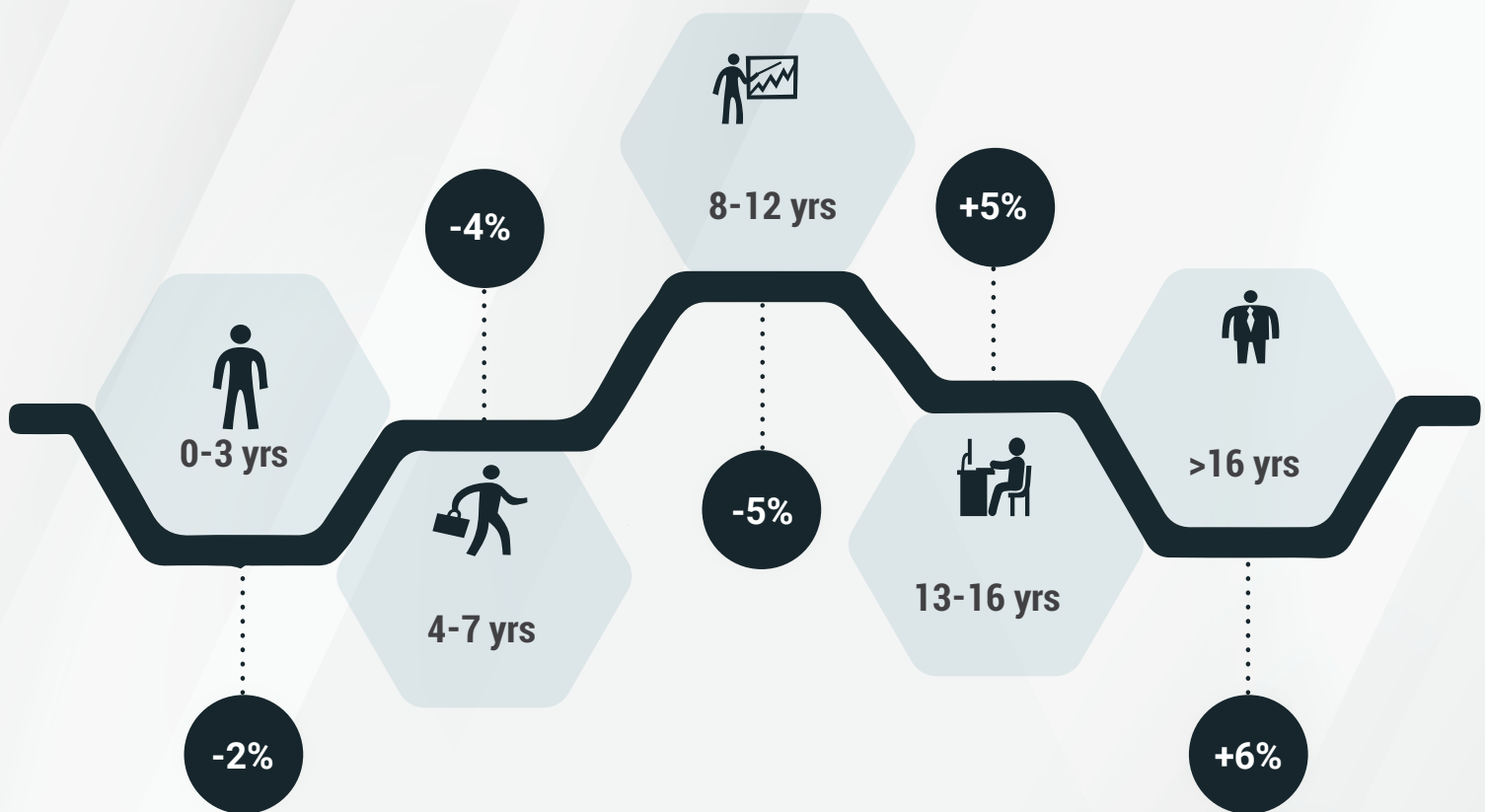
Figures are percentage change in Oct-22 over average of Oct-21

City*	Oct-21	Nov-21	Dec-22	Jan-22	Feb-22	Mar-22	Apr-22	May-22	Jun-22	Jul-22	Aug-22	Sep-22	Oct-22	YOY-Growth
Delhi / NCR	2452	2194	1885	2530	2932	1977	2811	2782	2792	3038	2605	2959	2436	↓ -1%
Mumbai	1787	1619	1413	1989	2182	2029	2100	2188	2219	2338	2150	2373	1926	↑ 8%
Bengaluru / Bangalore	3398	3027	2394	3767	4085	3701	3532	3484	3722	4076	3420	3671	2843	↓ -16%
Chennai	2158	1943	1662	2336	2659	2414	2364	2394	2432	2745	2519	2726	2047	↓ -5%
Hyderabad / Secunderabad	3638	3283	2725	3908	4329	4118	4097	3967	3907	4578	3812	4246	3187	↓ -12%
Pune	3742	3285	2740	4154	4430	4012	4025	4114	4143	5035	4073	4453	3348	↓ -11%
Kolkata	2639	2608	2360	3299	4071	3573	3486	3750	3760	4317	3773	4176	3040	↑ 15%
Ahmedabad	4201	3461	3115	3997	4614	4041	4235	4438	4598	5344	5110	5814	4519	↑ 8%
Chandigarh	2158	1836	1657	2162	2240	2053	2245	2294	2077	2014	1962	2133	1652	↓ -23%
Ernakulam / Kochi / Cochin	4013	3412	2845	4534	4422	4286	4527	4596	5478	5128	4748	4076	4214	↑ 5%
Vadodara / Baroda	2411	2113	1984	2425	2524	2516	2798	2872	2702	2881	2512	2901	2504	↑ 4%
Coimbatore	2811	2528	2145	2961	3699	3241	3365	3216	3466	4542	3748	3581	2888	↑ 3%
Jaipur	3615	3241	3074	3985	4461	3831	4435	4206	4272	4282	4632	4730	3895	↑ 8%

HIRING TRENDS ACROSS EXPERIENCE LEVELS



- While demand across experience professionals stayed neutral in Oct'22, senior professionals with over 13 years of experience saw an uptick in demand growing by (+6%) over last year.
- At the same time, demand for freshers stayed flat while the demand for mid-level professionals (4-12 years) declined by -4%.



Oct'22 vis-a-vis Oct'21

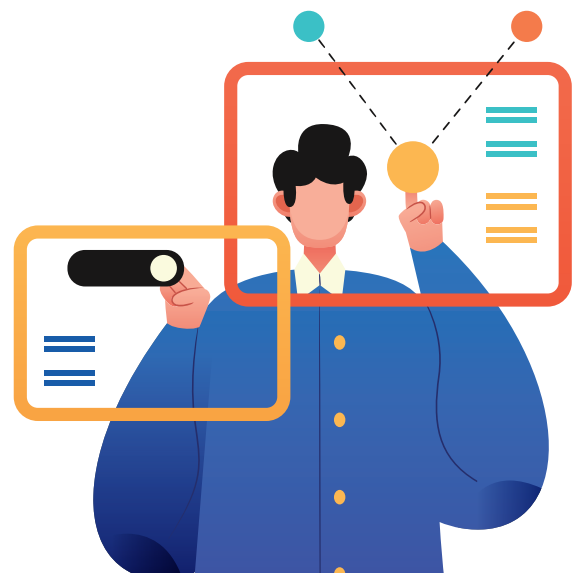


METHODOLOGY:

The Naukri JobSpeak is a monthly Index that calculates and records hiring activity based on the job listings on Naukri.com website month on month. The objective of Naukri JobSpeak is to measure the hiring activity in various industries, cities, and experience levels. The data is compiled from the website wherein jobs posted by clients on Naukri.com are considered. July 2008 is taken as the base with an index value of 1,000 and the subsequent monthly index is compared with the data for July 2008. The report shows hiring trends across industry sectors, geography, and experience level. More than 76,000 clients use Naukri.com, leading to the high reliability of data. The report does not cover gig employment, hyperlocal hiring or campus placement. Data on functional area hiring has been retired due to changes in the taxonomy. Over a long period of time, Naukri JobSpeak could be impacted by factors like internet penetration, Naukri market share, Naukri pricing and job listing drives.

ABOUT NAUKRI.COM

Naukri.com, India's No. 1 job site and the flagship brand of Info Edge introduced the concept of e-recruitment in India. Since its inception in 1997, Naukri.com has seen continuous growth while outperforming its competitors in every sphere. Info Edge was the first internet company to be listed in India. Being the market leader, the brand enjoys highest levels of awareness and market share amongst jobseekers and recruiters for more than a decade and has become synonymous with the jobs category. The brand leads with over 96% timeshare across Desktop, Mobile and App. The platform provides hiring-related services to corporates/recruiters, placement agencies and job seekers in India and overseas. It offers multiple products like Resume Database Access, listings, Branding and Response Management Tools. With more than 5,00,000 jobs at any point in time and over 80 million profiles, the brand services over 84,000 unique clients through its 58 offices in 43 cities in India.



ANNEXURE SECTORAL DATA													
Industry*	Oct-21	Nov-21	Dec-21	Jan-22	Feb-22	Mar-22	Apr-22	May-22	Jun-22	Jul-22	Aug-22	Sep-22	Oct-22
IT-Software/Software Services	4686	4155	3334	5370	5560	4983	4656	4711	5069	5872	-10%	-6%	-18%
BPO/ITES/CRM/Transcription	2044	1771	1567	1987	2468	2458	2659	2617	2600	2587	17%	18%	4%
Construction/Engineering/Cement/Metals	726	612	597	738	889	828	899	872	840	875	15%	16%	9%
Auto/Auto Ancillary	896	787	733	925	1160	1038	1146	1152	1106	1183	29%	23%	19%
Banking/Financial Services/Broking	2549	2305	2145	2860	3433	3138	3348	3299	3279	3731	43%	64%	40%
Oil and Gas/Power/Infrastructure/Energy	372	378	338	423	510	449	522	517	491	581	3%	43%	34%
Telecom/ISP	642	670	374	602	621	563	607	669	622	741	5%	6%	-19%
Insurance	1234	822	892	1291	2042	1541	1553	1946	1761	2124	87%	90%	93%
Industrial Products/Heavy Machinery	1106	1032	911	1153	1349	1345	1504	1440	1431	1454	21%	35%	16%
Pharma/Biotech/Clinical Research	1836	1654	1747	2169	2429	2117	2108	2078	1908	2081	-3%	5%	-5%
Travel & Hospitality	1207	1170	1007	1014	1432	1698	1609	1603	1468	1487	56%	48%	24%
FMCG/Foods/Beverage	1625	1492	1491	1737	2024	1842	1996	1960	1976	2203	15%	20%	7%
Chemicals/PetroChemical/Plastic/Rubber	1228	1096	1042	1242	1537	1453	1528	1775	1580	1621	25%	25%	1%
Education/Teaching/Training	4548	4143	3674	4755	5868	5753	6321	6030	5484	5311	8%	9%	5%
IT-Hardware & Networking	888	848	725	1006	1181	1338	1027	1045	757	923	0%	-12%	-24%
Retail	1587	1441	1300	1758	2004	1795	1992	2055	2042	1865	18%	17%	-1%
Media/Dotcom/Entertainment	281	259	196	223	307	291	337	378	370	387	53%	63%	30%
Medical/Healthcare/Hospital	6170	5192	3989	5260	6589	6248	6323	6403	5983	6402	13%	-6%	-13%
Real Estate/Property	2616	2249	2238	2816	3302	3171	3316	3180	3083	3261	24%	66%	20%
Recruitment/Employment Firm	4512	3953	3249	3988	5253	4895	5160	4339	4021	4140	-15%	-4%	-27%
Consumer Durables	892	717	649	833	964	788	918	891	896	797	3%	-6%	-27%
Accounting/Taxation/Finance	2322	2007	1834	2285	3216	2844	3124	3746	3608	5353	84%	87%	96%
Advertising/PR/MR/Events	3068	3060	2643	3480	3884	4068	4469	4143	4293	4270	50%	67%	33%
Textiles/Garments/Accessories	1834	1956	1640	2096	2403	2299	2504	2671	2200	2221	1%	-2%	-17%
Semiconductors/Electronics	3999	3441	3010	3710	4879	4695	5669	5040	6203	5760	21%	27%	4%
Courier/Transportation/Freight	2391	2171	1953	2506	2826	2684	2818	3030	2712	2667	29%	21%	14%
Architecture/Interior Designing	1807	1675	1345	1826	2490	2368	2565	2523	2269	2296	36%	9%	12%
Export/Import	1143	1199	908	1412	1461	1409	1612	1555	1486	1406	-14%	-3%	-7%
Printing/Packaging	890	900	771	960	1223	1053	1188	1168	1091	1002	20%	7%	1%
Shipping/Marine	705	817	738	835	991	872	953	935	961	1143	24%	52%	25%
Agriculture/Dairy	1702	1571	1208	1660	2276	1782	2006	1968	1768	1530	-10%	-20%	-17%
Office Equipment/Automation	2434	1553	1441	1321	1682	2201	1999	2211	2528	2488	44%	59%	59%
Fresher/Trainee	104	52	16	52	141	297	134	74	74	22	-22%	-72%	-86%
NGO/Social Services	2733	2896	2618	2378	3393	2839	2761	3052	2832	3272	28%	20%	-1%
Gems & Jewellery	5462	4232	4386	3830	3956	4609	4609	5488	4784	4709	27%	16%	7%
Paper	565	490	416	427	490	615	414	590	553	640	50%	-15%	44%
Legal	5387	3873	3956	2968	4096	5892	4972	5179	5031	6693	56%	36%	36%
Fertilizers/Pesticides	4185	4170	3436	3042	4051	5016	4126	4230	4972	6604	13%	31%	2%
Security/Law Enforcement	2811	1505	2137	1252	1723	1905	1832	2140	2684	1977	16%	39%	-17%
Defence/Government	5504	3218	2530	2355	4128	5387	4874	5900	5247	4991	74%	63%	64%