

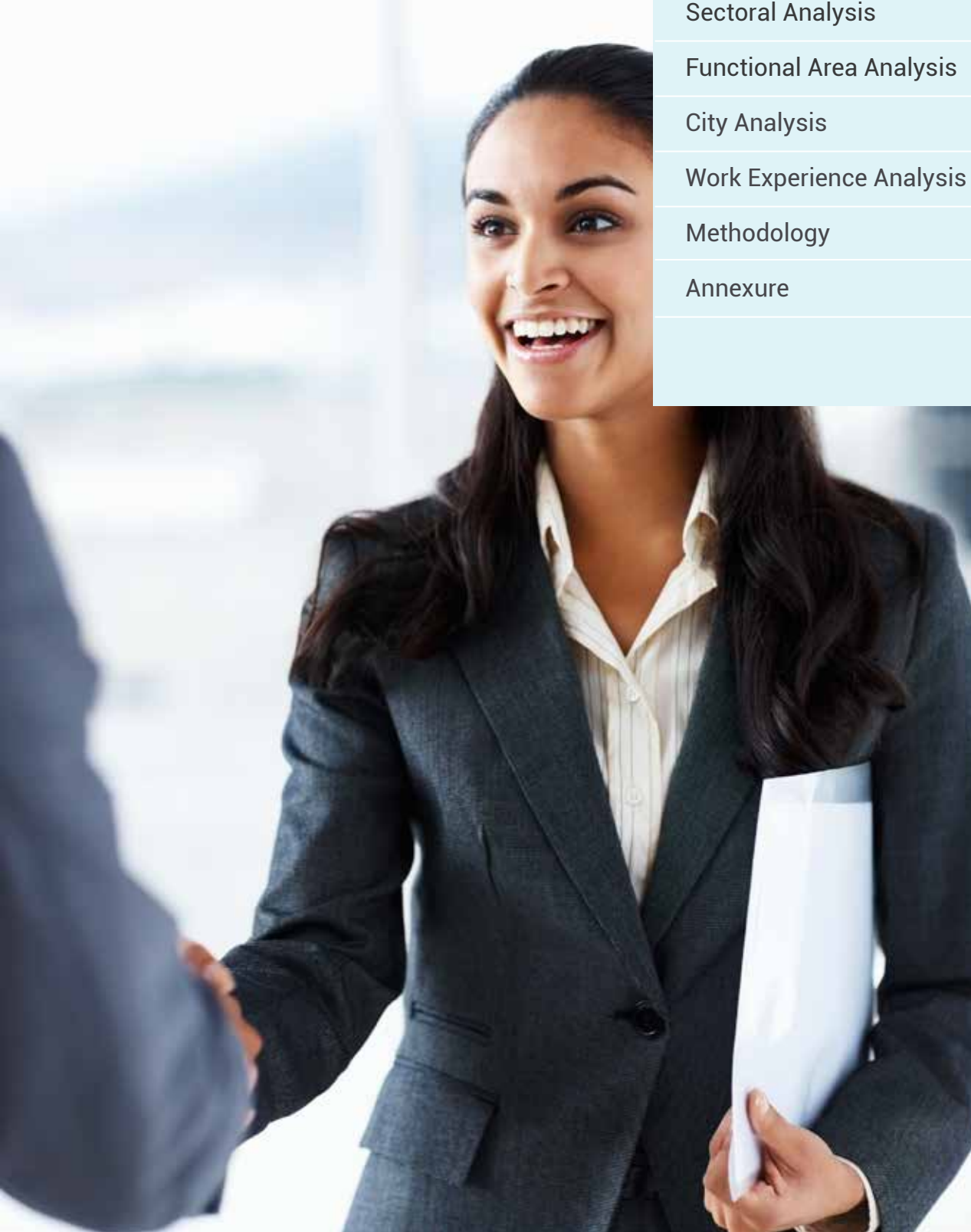
NAUKRI JOBSPEAK REPORT

Hiring Trends By City, Industry,
Functional Area and Experience



AUGUST 2021

TABLE OF CONTENTS

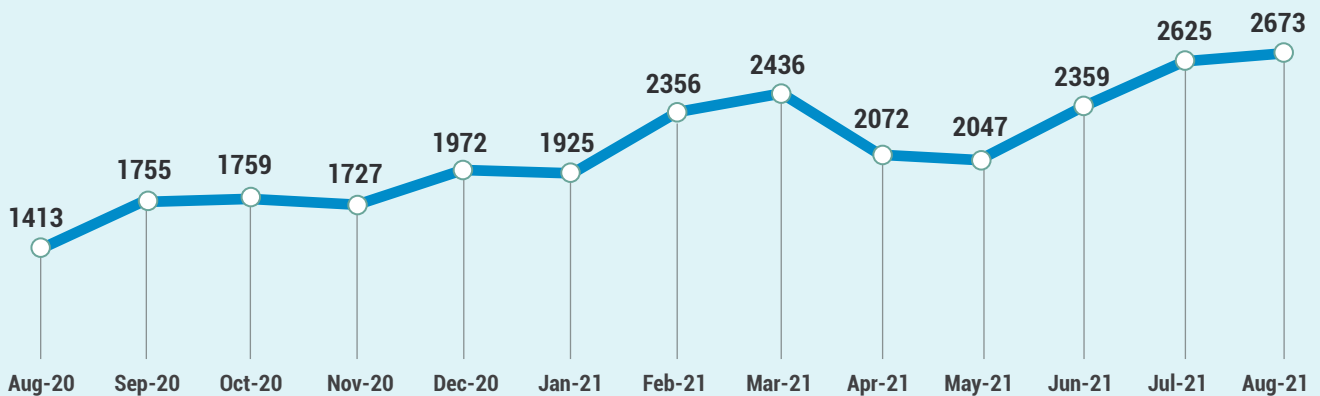


Overview	3
Sectoral Analysis	4
Functional Area Analysis	5
City Analysis	6
Work Experience Analysis	7
Methodology	8
Annexure	9-11

INDEX FOR AUGUST 2021

Indian job market recorded a strong recovery with 89% annual growth in Aug'21, with the Naukri JobSpeak index trending at 2673.

Overall Hiring Trends



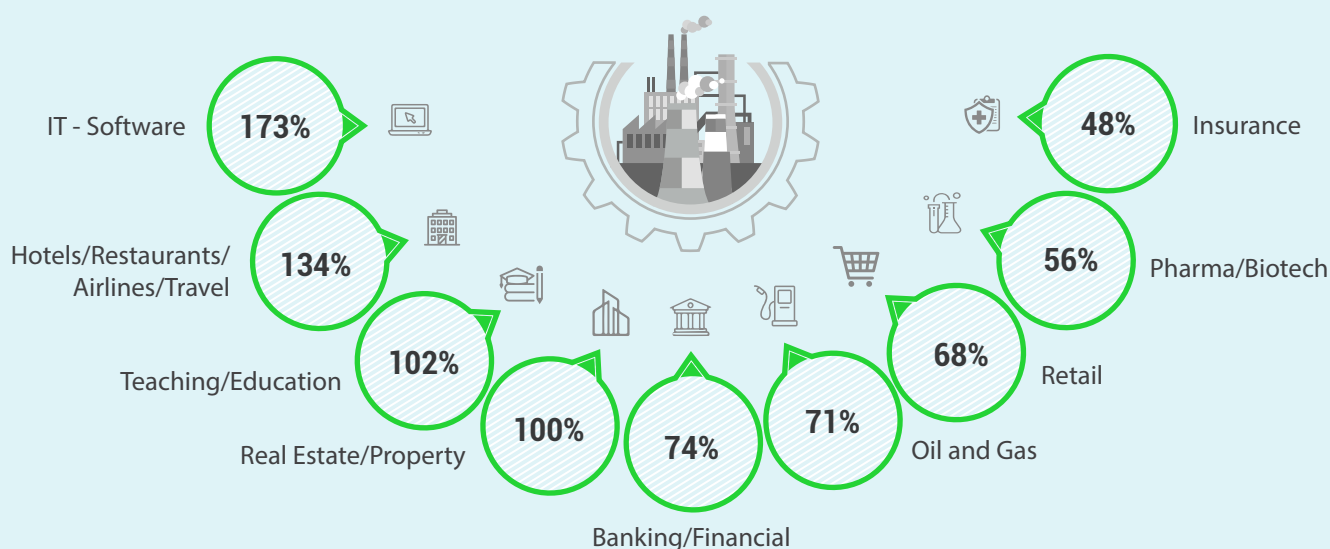
- Another victory for the jobs market is that hiring activity in Aug'21 has surpassed pre-pandemic levels in Aug'19 by 24%. Several sectors recorded growth Vs. Aug'19; the IT sector jumped 79% in Aug'21 powering the digital transformation of businesses.
- The top 6 metros have grown by 39% on an average in Aug'21 Vs. Aug'19 led by IT hubs Bengaluru (66%), Hyderabad (61%), Pune (54%), and Chennai (30%).
- Annually, the demand for senior professionals with 8-12 years' experience saw the maximum increase of 110% in Aug '21.

Pawan Goyal, Chief Business Officer, Naukri.com said,

"With a fair share of setbacks in 2020, we can finally acknowledge a trend of overall recovery in the job market. While Jan-May'21 were still in the red compared to pre-pandemic numbers of 2019, we see a positive growth trend starting in June'21. IT continues to dominate hiring and industries such as Education, Telecom, BFSI and Insurance are bouncing back too. As a result of increased hiring, the requirement for HR/Admin professionals too has seen a substantial uptick indicative of growth plans across organizations."

HIRING TRENDS ACROSS INDUSTRIES

- IT-Software led hiring with 173% YOY growth in Aug'21. In contrast to the situation in Aug'20 when lockdown regulations were still not relaxed, the Hospitality/ Travel sector has picked up in hiring by 134% in Aug'21.
- The Education/Teaching recorded a strong annual recovery growing by 102% in Aug'21 and has now surpassed hiring in Aug'19 by 34%.
- The growth in hiring in the Real Estate sector doubled over the last year, indicative of industry health improving. BFSI (74%), Oil and Gas (71%), Retail (68%) and Pharma/Biotech (56%) also saw growth in the same period.

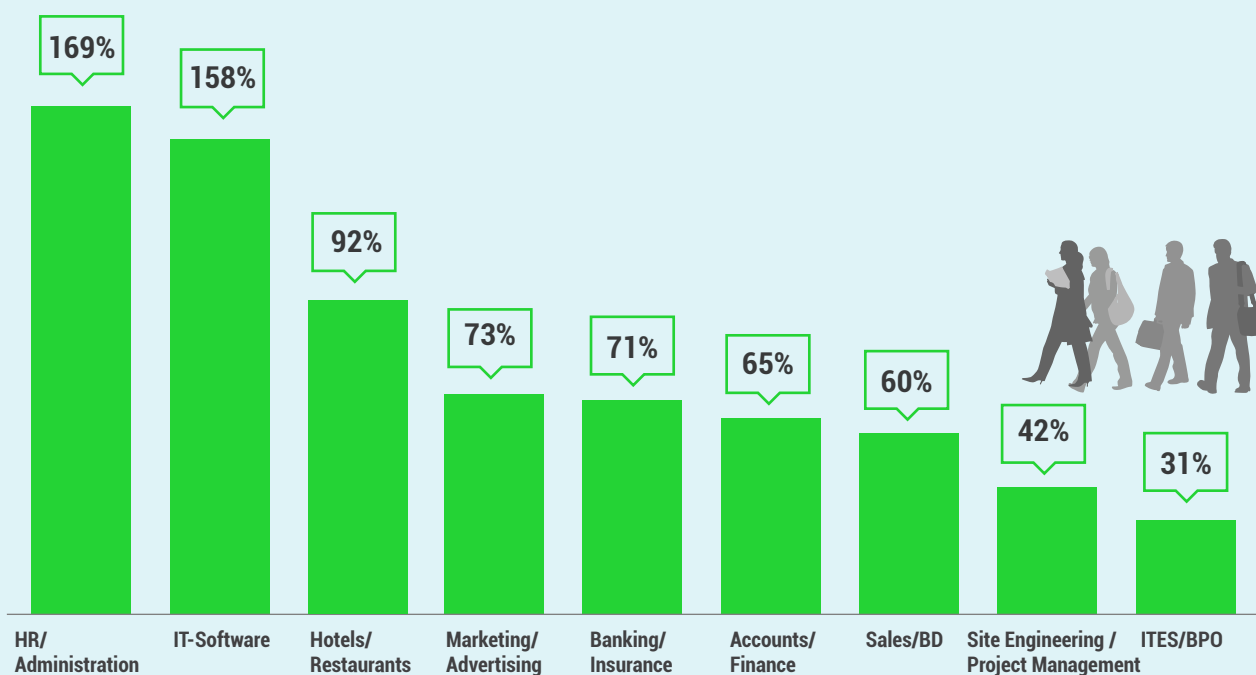


Figures are percentage change in Aug-21 over average of Aug-20

Industry*	Aug-20	Jan-21	Feb-21	Mar-21	Apr-21	May-21	Jun-21	Jul-21	Aug-21	Y-O-Y Growth
IT-Software/Software Services	1986	2976	3944	4376	3859	4409	4624	5466	5422	↑ 173%
BPO/ITES/CRM/Transcription	1527	1875	2184	2201	1838	1655	1891	1923	1994	↑ 31%
Auto/Auto Ancillary	771	934	1040	1009	835	682	806	885	1051	↑ 36%
Banking/Financial Services/Broking	1437	2182	2544	2565	1896	1617	2080	2340	2496	↑ 74%
Oil and Gas/Power/Infrastructure/Energy	313	393	443	475	411	306	360	394	535	↑ 71%
Telcom/ISP	507	405	503	526	445	499	637	562	630	↑ 24%
Insurance	795	1193	1176	893	849	863	1190	1278	1176	↑ 48%
Pharma/Biotech/Clinical Research	1243	1679	1816	1814	1657	1610	1970	1869	1937	↑ 56%
Hotels/Restaurants/Airlines/Travel	417	858	1015	932	597	350	654	887	977	↑ 134%
FMCG/Foods/Beverage	1227	1627	1950	1751	1487	1300	1592	1864	1719	↑ 40%
Education/Teaching/Training	2312	3640	4558	3984	3040	3244	3741	4030	4677	↑ 102%
IT-Hardware & Networking	829	1024	1209	1258	1073	898	1262	785	856	↑ 3%
Retailing	813	1158	1219	1406	939	747	1169	1366	1370	↑ 68%
Medical/Healthcare/Hospital	5279	4788	6133	6275	5656	4313	5671	5663	5778	↑ 9%

HIRING TRENDS ACROSS FUNCTIONAL AREAS

- As major industries get on the track to recovery, hiring for certain roles too have picked up with increased jobseeker movement across the market. Hiring for HR/Admin (169%) and IT-Software (158%) roles has gone up significantly in Aug'21 over Aug'20 among others.
- The lockdown restrictions relaxing post the second wave, demand for professionals in Ticketing / Travel (99%) and Hotels / Restaurants (92%) has also gone up.
- Hiring has also seen an uptick for professionals in Engineering Design/ R&D (90%), Marketing / Advertising (73%), Banking / Insurance (71%) and Sales/BD (63%) roles.



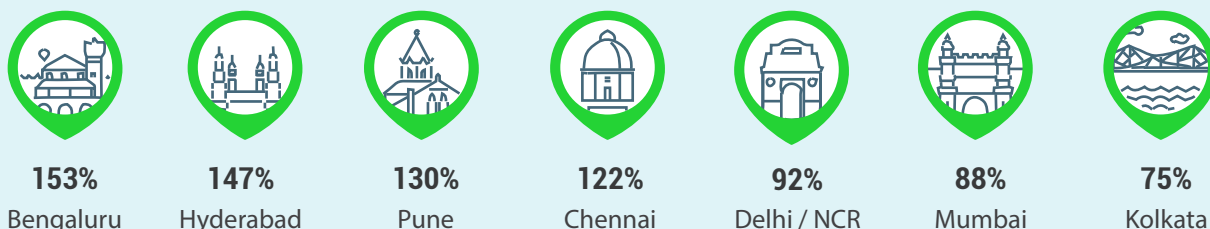
Figures are percentage change in Aug-21 over average of Aug-20

Functional Area*	Aug-20	Jan-21	Feb-21	Mar-21	Apr-21	May-21	Jun-21	Jul-21	Aug-21	Y-O-Y Growth
IT-Software	1674	2907	3806	4184	3725	4264	4430	5144	5085	↑ 158%
Sales / BD	1147	2042	2225	2089	1597	1271	1683	1934	2044	↑ 60%
ITES / BPO / KPO / Customer Service / Operations	1679	2367	2790	2801	2239	2058	2360	2471	2600	↑ 31%
Production / Maintenance / Quality	785	979	1060	962	937	733	893	904	967	↑ 6%
Accounts / Finance / Tax / CS / Audit	806	1272	1485	1556	1313	1126	1356	1490	1517	↑ 65%
HR / Administration / IR	747	1576	2014	2171	1745	1683	2199	2447	2397	↑ 169%
Site Engineering / Project Management	291	493	518	468	452	375	472	516	546	↑ 42%
Marketing / Advertising / MR / PR	822	1312	1576	1738	1280	1080	1501	1555	1779	↑ 73%
Banking / Insurance	648	1511	1810	1906	1487	1318	1729	1887	1897	↑ 71%
Purchase / Logistics / Supply Chain	695	1065	1262	1247	1136	979	1261	1270	1213	↑ 29%
IT- Hardware / Telecom / Technical Staff / Support	1216	1288	1494	1624	1346	1226	1628	1619	1660	↑ 35%
Teaching / Education	1802	3001	4464	3555	2427	2537	2755	2865	3357	↑ 63%
Pharma / Biotech / Healthcare / Medical / R&D	5183	5061	6517	6590	5994	5009	6673	6440	6494	↑ 9%
Hotels / Restaurants	534	887	971	994	675	340	591	851	1034	↑ 92%

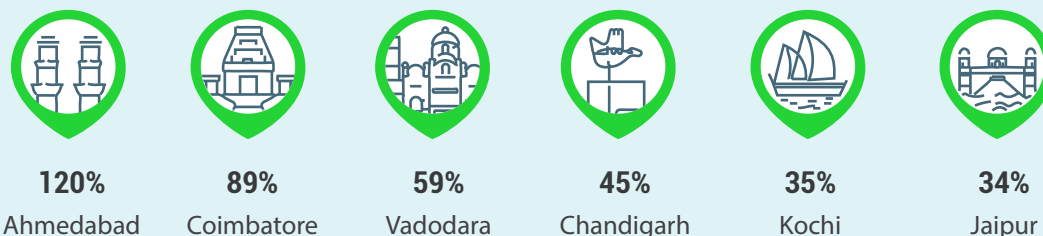
HIRING TRENDS ACROSS CITIES

- The impact of the lockdown in 2020 and resultant freeze in hiring adversely affected the metros which have now bounced back, annually growing by almost 2X in Aug'21 as compared to Tier 2 cities.
- IT hubs have continued to dominate hiring, with Hyderabad (147%), Bangalore (153%), Chennai (130%) and Pune (122%) leading the pack.
- Tier 2 cities recorded an average annual growth of 64% with Ahmedabad in the lead, growing by 120% in Aug'21.

Metro Cities



Emerging Cities

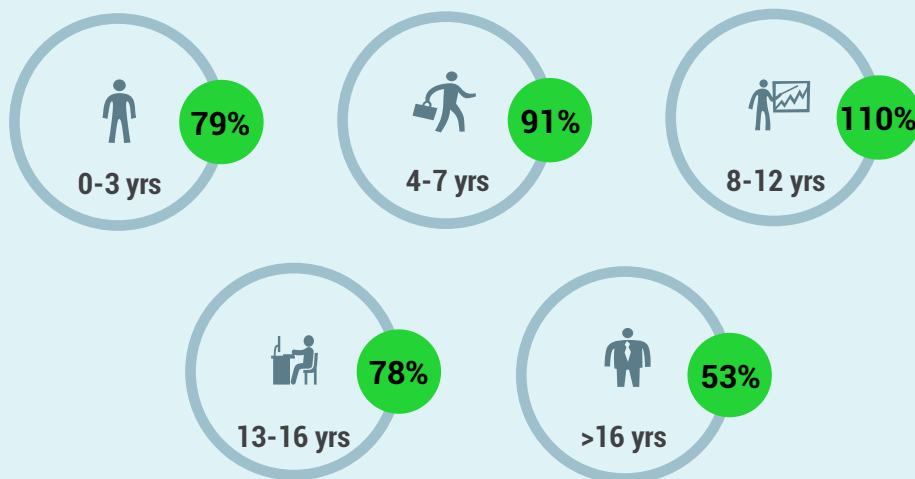


Figures are percentage change in Aug-21 over average of Aug-20

City*	Aug-20	Jan-21	Feb-21	Mar-21	Apr-21	May-21	Jun-21	Jul-21	Aug-21	Y-O-Y Growth
Delhi / NCR	1338	1876	2258	2332	1913	1708	2158	2434	2570	↑ 92%
Mumbai	951	1257	1502	1618	1289	1355	1553	1715	1783	↑ 88%
Bengaluru / Bangalore	1501	2099	2743	3102	2783	3043	3177	3710	3791	↑ 153%
Chennai	1037	1520	1834	1952	1765	1767	2006	2197	2307	↑ 122%
Hyderabad / Secunderabad	1597	2357	3020	3235	3097	3217	3527	4087	3946	↑ 147%
Pune	1770	2543	3149	3253	2907	3252	3588	4054	4079	↑ 130%
Kolkata	1817	2335	2604	2514	2525	2356	2925	3042	3176	↑ 75%
Ahmedabad	1936	2669	3487	3924	3469	3532	4483	4368	4255	↑ 120%
Chandigarh	1636	2032	2139	2246	1739	1835	2172	2264	2377	↑ 45%
Ernakulam / Kochi / Cochin	2768	3575	3797	3825	3652	3416	3619	3892	3729	↑ 35%
Vadodara / Baroda	1769	2160	2595	2544	2115	1933	2484	2593	2808	↑ 59%
Coimbatore	1550	2074	2359	2509	2071	1962	2164	2676	2932	↑ 89%
Jaipur	2999	3691	3863	3909	2951	2390	3597	3991	4033	↑ 34%

HIRING TRENDS ACROSS EXPERIENCE LEVELS

- The demand for senior professionals with 8-12 years' experience saw the maximum increase of 110% in Aug '21 Vs. Aug'20.
- Other experience bands such as 0-3 years (79%), 4-7 years (91%), and over 13 years (65%) also recorded commendable growth in the same period.



Figures are percentage change in Aug-21 over average of Aug-20



METHODOLOGY

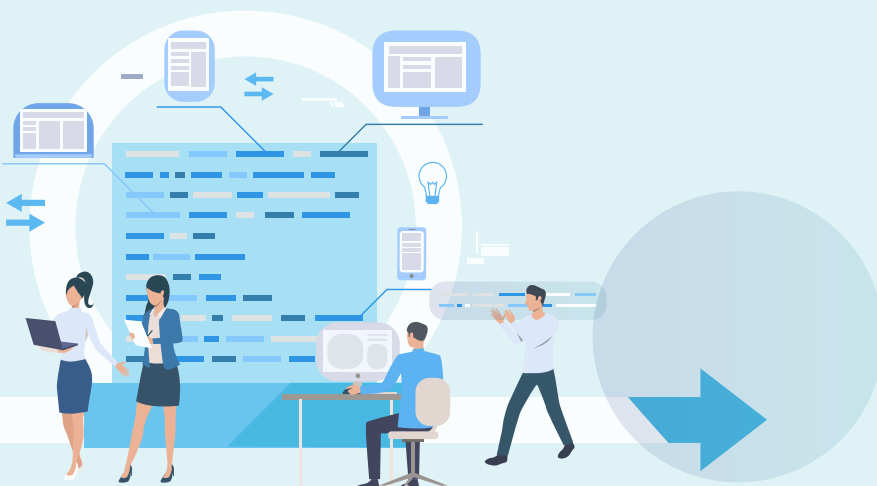
The Naukri JobSpeak is a monthly Index that calculates and records hiring activity based on the job listings on Naukri.com website month on month. The objective of Naukri JobSpeak is to measure the hiring activity in various industries, cities, functional areas and experience levels. The data is compiled from the website wherein jobs posted by clients on Naukri.com are considered. July 2008 is taken as the base with an index value of 1,000 and the subsequent monthly index is compared with the data for July 2008. The report shows hiring trends across industry sectors, geography, experience level, and functional areas. More than 76,000 clients use Naukri.com, leading to the high reliability of data. The report does not cover gig employment, hyperlocal hiring or campus placement. Over a long period of time, Naukri JobSpeak could be impacted by factors like internet penetration, Naukri market share, Naukri pricing and job listing drives.

About Naukri.com

Naukri.com, India's No. 1 job site and the flagship brand of Info Edge introduced the concept of e-recruitment in India. Since its inception in 1997, Naukri.com has seen continuous growth while outperforming its competitors in every sphere. Info Edge was the first internet company to be listed in India. The brand enjoys a timeshare of over 96% across Desktop, Mobile and App as per similar web. Naukri.com is a recruitment platform that provides hiring-related services to corporates/recruiters, placement agencies and job seekers in India and overseas. It offers multiple products like Resume Database Access, listings and Response Management Tools. With more than 5,40,000 jobs live at any point and over 69 million CVs, Naukri.com services over 59,500 unique clients. The company operates 77 offices in 47 cities in India and overseas offices in Dubai, Riyadh, Abu Dhabi, Qatar and Bahrain.

Disclaimer

The data is only representative of the listings on Naukri.com. Our analytics team has used statistical techniques to derive insights which might be useful for our users/stake holders/ audiences. There may be a statistical margin of error.



ANNEXURE

SECTORAL DATA

Industry*	Aug-20	Sep-20	Oct-20	Nov-20	Dec-20	Jan-21	Feb-21	Mar-21	Apr-21	May-21	Jun-21	Jul-21	Aug-21
IT-Software/Software Services	1986	2375	2533	2779	3081	2976	3944	4376	3859	4409	4624	5466	5422
BPO/ITES/CRM/Transcription	1527	1971	1878	1791	1819	1875	2184	2201	1838	1655	1891	1923	1994
Construction/Engineering/Cement/ Auto/Auto Ancillary	490	583	583	555	663	651	683	647	553	490	658	667	692
Banking/Financial Services/Broking	1437	1910	1832	1772	2088	2182	2544	2565	1896	1617	2080	2340	2496
Oil and Gas/Power/Infrastructure	313	408	386	332	431	393	443	475	411	306	360	394	535
Telcom/ISP	507	470	349	350	439	405	503	526	445	499	637	562	630
Insurance	795	1017	910	759	1100	1193	1176	893	849	863	1190	1278	1176
Industrial Products/Heavy Machinery	773	1041	967	835	1036	951	1081	1128	965	799	998	1088	1095
Pharma/Biotech/Clinical Research	1243	1794	1494	1477	1885	1679	1816	1814	1657	1610	1970	1869	1937
Hotels/Restaurants/Airlines/Travel	417	616	818	738	826	858	1015	932	597	350	654	887	977
FMCG/Foods/Beverage	1227	1754	1591	1404	1701	1627	1950	1751	1487	1300	1592	1864	1719
Chemicals/PetroChemical/Plastic/ Education/Teaching/Training	937	1439	1246	1018	1356	1176	1260	1196	1134	892	1077	1057	1110
IT-Hardware & Networking	829	1354	1055	949	1050	1024	1209	1258	1073	898	1262	785	856
Retailing	813	935	1051	981	1084	1158	1219	1406	939	747	1169	1366	1370
Media/Dotcom/Entertainment	589	816	758	637	596	712	847	754	661	338	269	228	235
Medical/Healthcare/Hospital	5279	5091	4866	5044	5736	4788	6133	6275	5656	4313	5671	5663	5778
Real Estate/Property	1364	1963	1983	1939	2068	2345	2661	2438	1754	1322	2105	2645	2723
Recruitment/Employment Firm	2127	3122	2798	2683	3012	3364	3894	4276	3675	3137	3839	4341	4398
Consumer Durables	641	808	842	777	902	975	1124	930	797	580	746	937	779
Accounting/Taxation/Finance	2036	2510	2480	2357	2688	2564	2918	3093	2477	1641	2017	2551	2201
Advertising/PR/MR/Events	1707	1979	2256	2039	2230	2258	2673	2725	2079	1626	2243	2571	2851
Textiles/Garments/Accessories	1236	1336	1488	1508	1784	1591	1706	1678	1479	1221	1716	1824	1995
Semiconductors/Electronics	1245	1128	1441	1278	1581	1569	1679	1571	1761	2463	3351	3377	3526
Courier/Transportation/Freight	1505	1954	1652	1601	1531	1518	1934	2118	1533	1348	1869	2008	2059
Architecture/Interior Designing	1151	1452	1508	1384	1749	1696	2135	2202	1604	974	1349	1787	1707
Export/Import	796	1086	1226	1175	1438	1349	1287	1229	938	831	1317	1237	1372
Printing/Packaging	1021	1134	1082	943	1341	954	1527	1456	1164	752	959	986	1018
Shipping/Marine	512	874	920	633	627	690	600	597	640	534	682	664	764
Agriculture/Dairy	1819	2333	2243	1793	2192	1940	2303	2519	1836	1534	1923	1819	1688
Office Equipment/Automation	411	624	524	480	673	648	794	925	654	1044	1170	1415	1514
Fresher/Trainee	1365	2040	1818	1587	2604	1974	1832	1388	1127	349	16	82	67
NGO/Social Services	1242	1870	1987	1679	2129	2243	2475	2860	1672	1803	2317	2442	2754
Gems & Jewellery	2612	3750	4144	3426	4445	3616	4421	4709	3205	2888	2985	3830	4320
Paper	465	519	377	493	578	389	751	540	377	276	713	603	402
Legal	1811	2407	2226	2116	2434	2686	3318	2909	3068	2627	3189	3295	3710
Tyres	371	552	460	567	401	564	855	890	629	223	#N/A	#N/A	#N/A
Fertilizers/Pesticides	1781	1748	1855	1901	1959	2567	2612	2330	1748	2983	4310	3710	4155
Security/Law Enforcement	1886	1968	2322	1500	2104	1560	2088	2648	1856	1288	1500	2050	2031
Defence/Government	2239	2603	2845	1856	1796	1399	1523	1329	1278	1562	3591	3568	2985

ANNEXURE

FUNCTIONAL AREA

Functional*	Aug-20	Sep-20	Oct-20	Nov-20	Dec-20	Jan-21	Feb-21	Mar-21	Apr-21	May-21	Jun-21	Jul-21	Aug-21
IT-Software	1969	2416	2462	2718	2982	2907	3806	4184	3725	4264	4430	5144	5085
Sales / BD	1280	1731	1837	1623	1945	2042	2225	2089	1597	1271	1683	1934	2044
ITES / BPO / KPO / Customer Service	1986	2452	2482	2220	2431	2367	2790	2801	2239	2058	2360	2471	2600
Production / Maintenance / Quality	909	1168	1038	866	1081	979	1060	962	937	733	893	904	967
Accounts / Finance / Tax / CS / Audit	921	1169	1246	1104	1258	1272	1485	1556	1313	1126	1356	1490	1517
HR / Administration / IR	892	1260	1236	1292	1580	1576	2014	2171	1745	1683	2199	2447	2397
Site Engineering / Project Management	385	463	467	444	552	493	518	468	452	375	472	516	546
Marketing / Advertising / MR / PR	1030	1241	1241	1194	1384	1312	1576	1738	1280	1080	1501	1555	1779
Banking / Insurance	1111	1404	1294	1239	1463	1511	1810	1906	1487	1318	1729	1887	1897
Engineering Design / R&D	548	708	718	635	802	722	851	787	851	725	839	903	1044
Purchase / Logistics / Supply Chain	937	1160	1095	959	1177	1065	1262	1247	1136	979	1261	1270	1213
Secretary / Front Office / Data Entry	536	773	716	683	875	812	966	890	642	387	740	901	1001
IT- Hardware / Telecom / Technical	1228	1843	1503	1434	1458	1288	1494	1624	1346	1226	1628	1619	1660
Teaching / Education	2060	2683	2160	2027	2572	3001	4464	3555	2427	2537	2755	2865	3357
Pharma / Biotech / Healthcare	5968	5648	5079	5093	6178	5061	6517	6590	5994	5009	6673	6440	6494
Hotels / Restaurants	538	659	841	762	864	887	971	994	675	340	591	851	1034
Top Management	581	729	575	942	738	659	663	657	568	589	767	702	628
Architecture / Interior Design	778	985	979	913	1066	1138	1329	1212	1168	639	1796	1176	1294
Export / Import / Merchandising	1209	1000	1167	1053	1264	1134	1232	1309	947	1055	1318	1294	1391
Corporate Planning / Consulting	1010	1265	1342	1134	1502	1496	1831	1817	1624	1593	1921	2987	2975
Legal	970	1265	1177	1190	1400	1519	1648	1683	1505	1340	1729	1771	1708
Web / Graphic Design / Visualiser	3080	3241	3780	3471	4047	4260	4452	4530	3552	2901	4149	4408	4750
Content / Journalism	2188	2394	2604	2438	2604	2686	3486	3001	2558	2348	2811	2927	3106
Ticketing / Travel / Airlines	732	1203	1622	795	1164	1053	1341	1280	1306	627	1099	1559	1453
Fashion / Garments / Merchandising	641	898	968	952	1463	799	1156	939	1000	682	1115	1452	1562
Guards / Security Services	949	1339	1122	833	1326	745	960	1428	1022	724	833	1010	918
TV / Films / Production	865	1148	1339	1097	1094	1110	1229	1126	1383	669	1939	1192	1045
Packaging	1106	1462	1179	1143	1215	834	1264	1179	974	961	1068	1233	907