

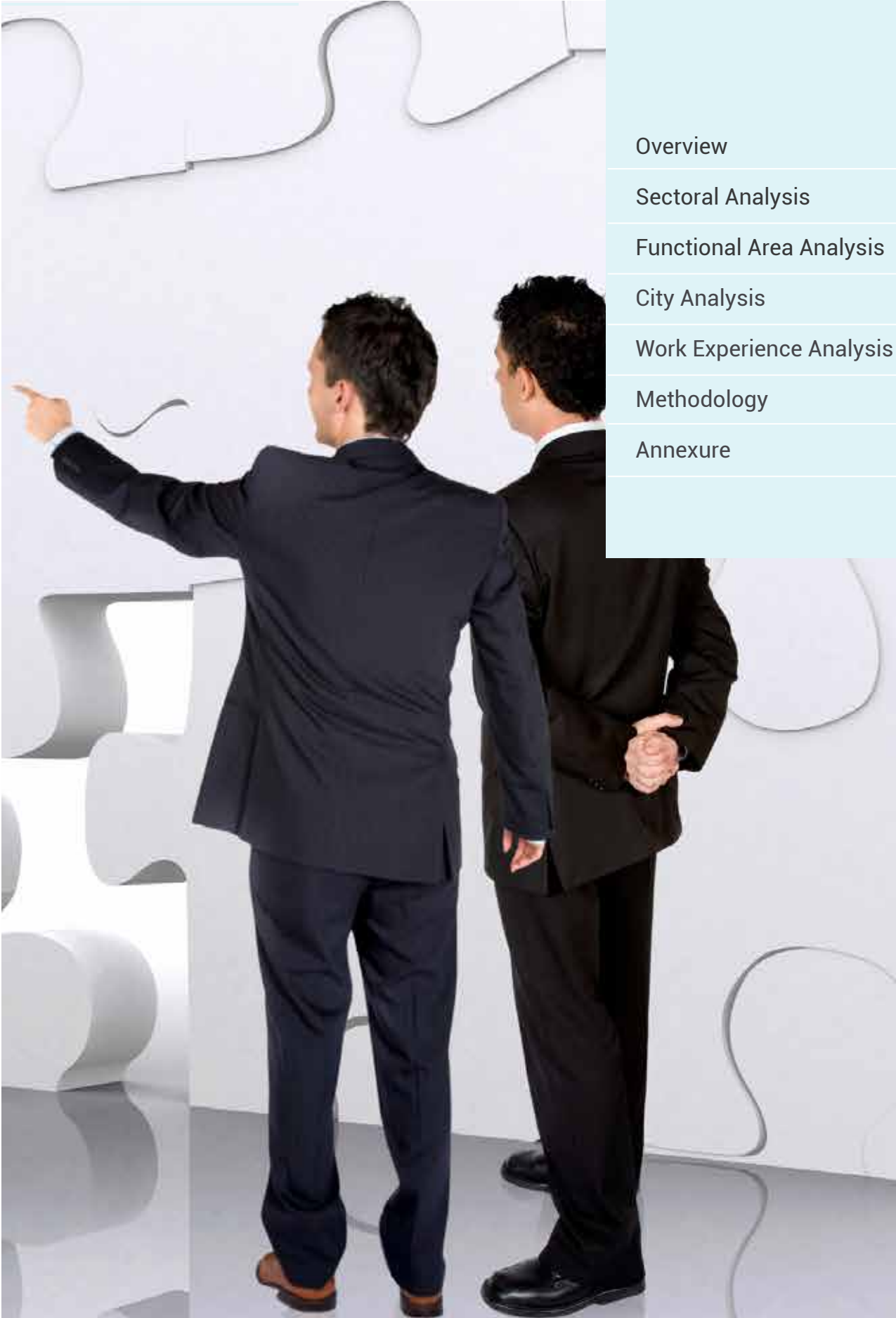
NAUKRI JOBSPEAK REPORT

Hiring Trends By City, Industry,
Functional Area and Experience



MAY 2021

TABLE OF CONTENTS

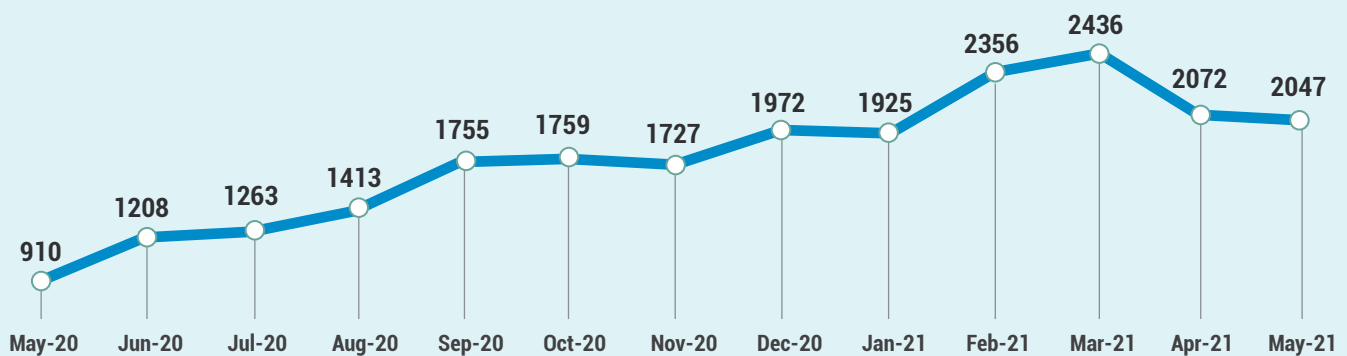


Overview	3
Sectoral Analysis	4
Functional Area Analysis	5
City Analysis	6
Work Experience Analysis	7
Methodology	8
Annexure	9-11

INDEX FOR MAY 2021

At an overall hiring level, Naukri JobSpeak stabilized and turned flat (-1%) in May'21, at 2,047 versus April'21.

Overall Hiring Trends



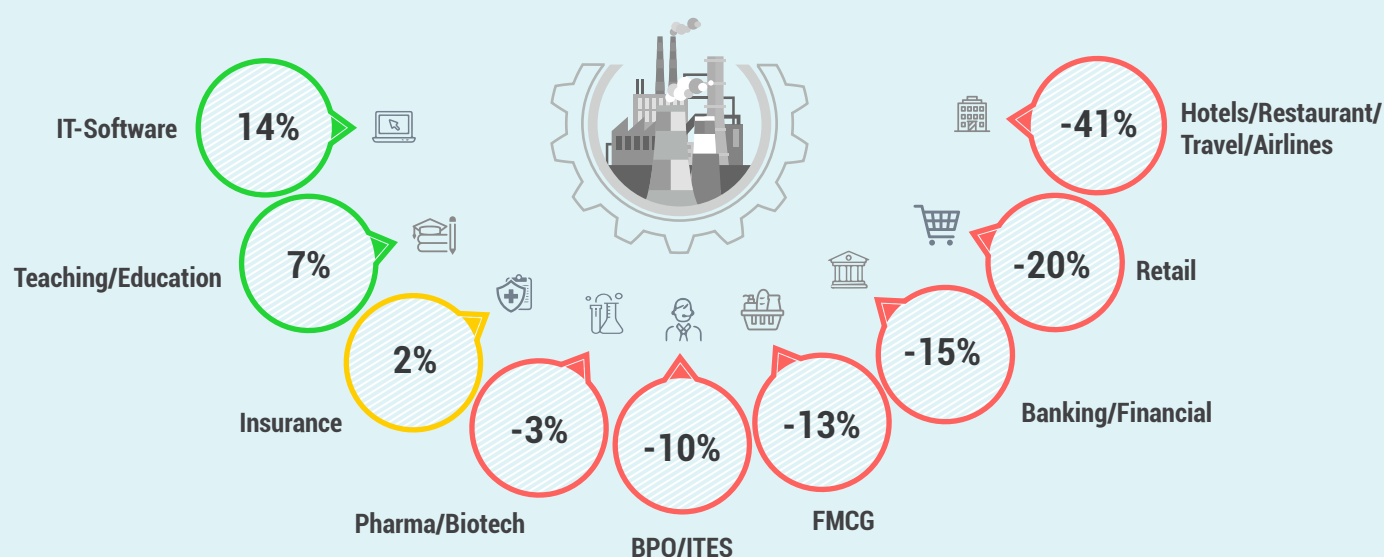
- The pandemic has accelerated the pace of digital transformation across sectors and created a need for rapid and scaled deployment, thus reflected in the IT-Software industry, growing at +14% sequentially in May'21.
- The growth of tech is reflected in hiring as major IT Hubs like Pune (+12%), Bangalore (+9%) and Hyderabad (+4%) saw an uptick in recruitment in May'21 Vs April'21.
- Hiring for senior professionals is up; 8-12 years' experience (+4%) as well as more than 16 years' experience (+4%) grew sequentially in May'21.

Pawan Goyal, Chief Business Officer, Naukri.com said,

"It is encouraging to see a much lesser impact of the second wave of the pandemic on the job economy versus last year. Even though the hiring activity declined by 15% in Apr'21 over Mar'21, we see hiring turning flat in May'21, signaling resilience and recovery. With the year 2021 seeing, a strong wave of hyper-digitization, the IT sector continues to drive hiring, recording a robust +14% sequential growth in May'21. In fact, hiring for tech roles is at an all-time high versus pre-COVID levels; growing at 39% in May'21 over May'19."

HIRING TRENDS ACROSS INDUSTRIES

- IT-Software led hiring with +14% growth. The Education/Teaching sector grew by +7% sequentially in May'21 after posting a continuous decline over the past few months. While Telecom/ISP (+12%) grew, the Insurance (+2%) sector remained flat.
- Sectors such as Banking/Finance (-15%), FMCG (-13%) and BPO/ITES (-10%) remained impacted in hiring activity in May'21 Vs Apr'21.
- The shutdown of hotels, restaurants and non-essential offices led to a sequential decline in hiring in sectors such as Hospitality (-41%) and Retail (-20%) in May'21.

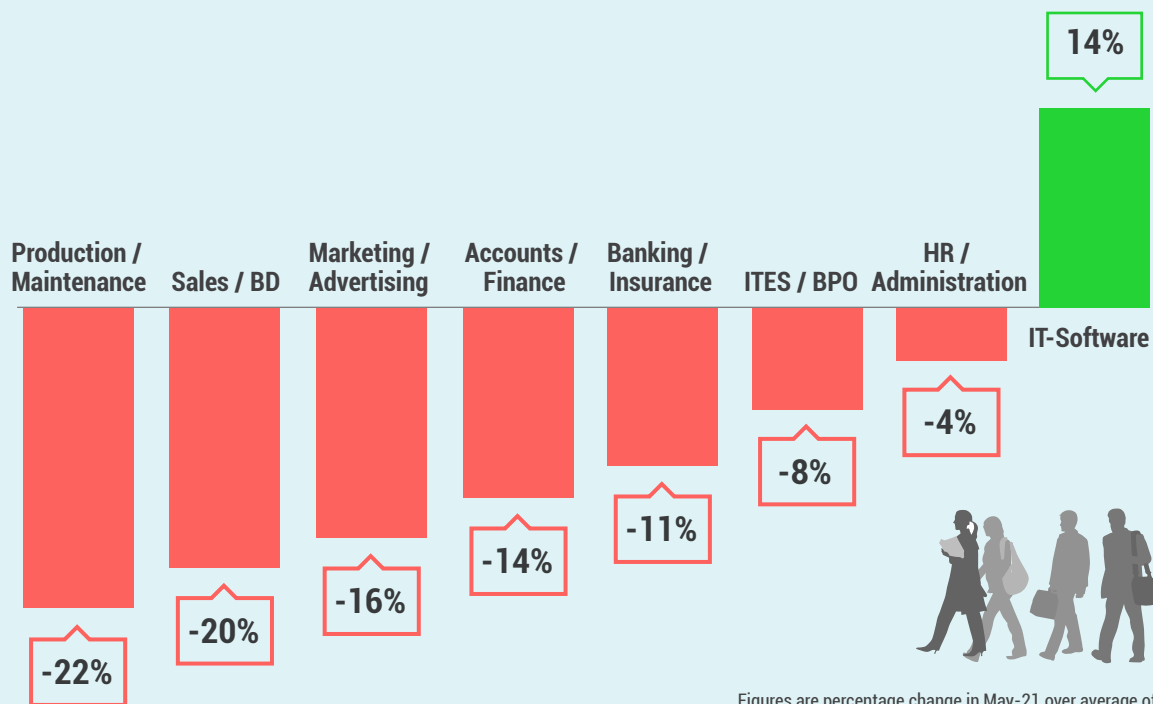


Figures are percentage change in May-21 over average of Apr-21

Industry*	May-20	Jan-21	Feb-21	Mar-21	Apr-21	May-21	Y-0-Y Growth	M-0-M Growth
IT-Software/Software Services	1472	2976	3944	4376	3859	4409	↑ 200%	↑ 14%
BPO/ITES/CRM/Transcription	839	1875	2184	2201	1838	1655	↑ 97%	↓ -10%
Auto/Auto Ancillary	327	934	1040	1009	835	682	↑ 108%	↓ -18%
Banking/Financial Services/Broking	858	2182	2544	2565	1896	1617	↑ 88%	↓ -15%
Oil and Gas/Power/Infrastructure/Energy	249	393	443	475	411	306	↑ 23%	↓ -25%
Telcom/ISP	300	405	503	526	445	499	↑ 66%	↑ 12%
Insurance	476	1193	1176	893	849	863	↑ 81%	→ 2%
Pharma/Biotech/Clinical Research	1125	1679	1816	1814	1657	1610	↑ 43%	↓ -3%
Hotels/Restaurants/Airlines/Travel	207	858	1015	932	597	350	↑ 69%	↓ -41%
FMCG/Foods/Beverage	700	1627	1950	1751	1487	1300	↑ 86%	↓ -13%
Education/Teaching/Training	1582	3640	4558	3984	3040	3244	↑ 105%	↑ 7%
IT-Hardware & Networking	558	1024	1209	1258	1073	898	↑ 61%	↓ -16%
Retailing	308	1158	1219	1406	939	747	↑ 143%	↓ -20%
Medical/Healthcare/Hospital	4060	4788	6133	6275	5656	4313	↑ 6%	↓ -24%

HIRING TRENDS ACROSS FUNCTIONAL AREAS

- The Naukri JobSpeak index reports a +14% increase in demand for tech professionals in May'21 Vs Apr'21 as the majority of tech giants announced bulk-hiring plans for 2021. Teaching/ Education roles grew by 5% in the same period.
- The demand for professionals in HR/Admin (-4%), ITES/BPO (-8%) and Content/Journalism (-8%) domains was also less impacted in May'21 sequentially.
- Amidst the lockdown restrictions across the country, sequential hiring for Sales/BD (-20%), Production/Quality (-22%) and Purchase/Logistics (-14%) roles saw a decline in May'21.



Functional Area*	May-20	Jan-21	Feb-21	Mar-21	Apr-21	May-21	Y-O-Y Growth	M-O-M Growth
IT-Software	1388	2907	3806	4184	3725	4264	↑ 207%	↑ 14%
Sales / BD	863	2042	2225	2089	1597	1271	↑ 47%	↓ -20%
ITES / BPO / KPO / Customer Service / Operations	1153	2367	2790	2801	2239	2058	↑ 78%	↓ -8%
Production / Maintenance / Quality	486	979	1060	962	937	733	↑ 51%	↓ -22%
Accounts / Finance / Tax / CS / Audit	568	1272	1485	1556	1313	1126	↑ 98%	↓ -14%
HR / Administration / IR	570	1576	2014	2171	1745	1683	↑ 195%	↓ -4%
Site Engineering / Project Management	206	493	518	468	452	375	↑ 82%	↓ -17%
Marketing / Advertising / MR / PR	658	1312	1576	1738	1280	1080	↑ 64%	↓ -16%
Banking / Insurance	526	1511	1810	1906	1487	1318	↑ 151%	↓ -11%
Purchase / Logistics / Supply Chain	475	1065	1262	1247	1136	979	↑ 106%	↓ -14%
IT- Hardware / Telecom / Technical Staff / Support	665	1288	1494	1624	1346	1226	↑ 84%	↓ -9%
Teaching / Education	1402	3001	4464	3555	2427	2537	↑ 81%	↑ 5%
Pharma / Biotech / Healthcare / Medical / R&D	3636	5061	6517	6590	5994	5009	↑ 38%	↓ -16%
Hotels / Restaurants	272	887	971	994	675	340	↑ 25%	↓ -50%

HIRING TRENDS ACROSS CITIES

- Major IT Hubs like Pune (+12%), Bangalore (+9%) and Hyderabad (+4%) saw an uptick in hiring activity in May'21 Vs Apr'21 led by tech talent demand.
- With Maharashtra successfully containing the pandemic, hiring activity grew by +5% sequentially in Mumbai. On the other hand, hiring in Delhi/NCR remained impacted and declined by 11% in May'21 Vs Apr'21.
- As the pandemic moved further into smaller cities in the second wave, tier-2 cities remain impacted in hiring including Jaipur (-19%), Vadodara (-9%) and Coimbatore (-5%).

Metro Cities



-11%

Delhi / NCR



-7%

Kolkata



0%

Chennai



4%

Hyderabad



5%

Mumbai



9%

Bengaluru



12%

Pune

Emerging Cities



-19%

Jaipur



-9%

Vadodara



-6%

Kochi



-5%

Coimbatore



2%

Ahmedabad



5%

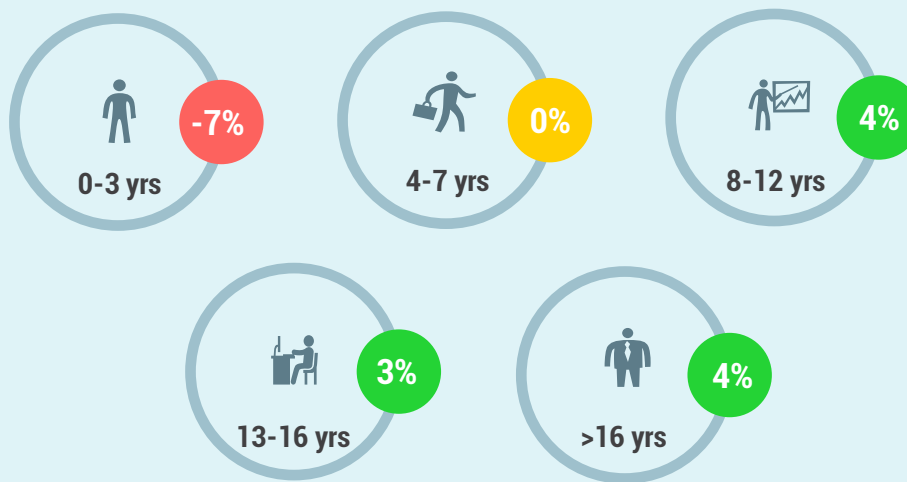
Chandigarh

Figures are percentage change in May-21 over average of Apr-21

City*	May-20	Jan-21	Feb-21	Mar-21	Apr-21	May-21	Y-0-Y Growth	M-0-M Growth
Delhi / NCR	820	1876	2258	2332	1913	1708	↑ 108%	↓ -11%
Mumbai	640	1257	1502	1618	1289	1355	↑ 112%	↑ 5%
Bengaluru / Bangalore	1060	2099	2743	3102	2783	3043	↑ 187%	↑ 9%
Chennai	698	1520	1834	1952	1765	1767	↑ 153%	→ 0%
Hyderabad / Secunderabad	1048	2357	3020	3235	3097	3217	↑ 207%	↑ 4%
Pune	1026	2543	3149	3253	2907	3252	↑ 217%	↑ 12%
Kolkata	856	2335	2604	2514	2525	2356	↑ 175%	↓ -7%
Ahmedabad	1304	2669	3487	3924	3469	3532	↑ 171%	→ 2%
Chandigarh	881	2032	2139	2246	1739	1835	↑ 108%	↑ 5%
Ernakulam / Kochi / Cochin	1768	3575	3797	3825	3652	3416	↑ 93%	↓ -6%
Vadodara / Baroda	1091	2160	2595	2544	2115	1933	↑ 77%	↓ -9%
Coimbatore	1403	2074	2359	2509	2071	1962	↑ 40%	↓ -5%
Jaipur	1553	3691	3863	3909	2951	2390	↑ 54%	↓ -19%

HIRING TRENDS ACROSS EXPERIENCE LEVELS

- Hiring activity across experience bands remained stable in May'21 Vs Apr'21 with the 0-3 years' experience band (-7%) being the most impacted.
- Interestingly, hiring for professionals with 8-12 years' experience (+4%) as well as more than 16 years' experience (+4%) grew sequentially in May'21, indicating that organizations prefer experienced professionals to steer them through these turbulent times.



Figures are percentage change in May-21 over average of Apr-21



METHODOLOGY

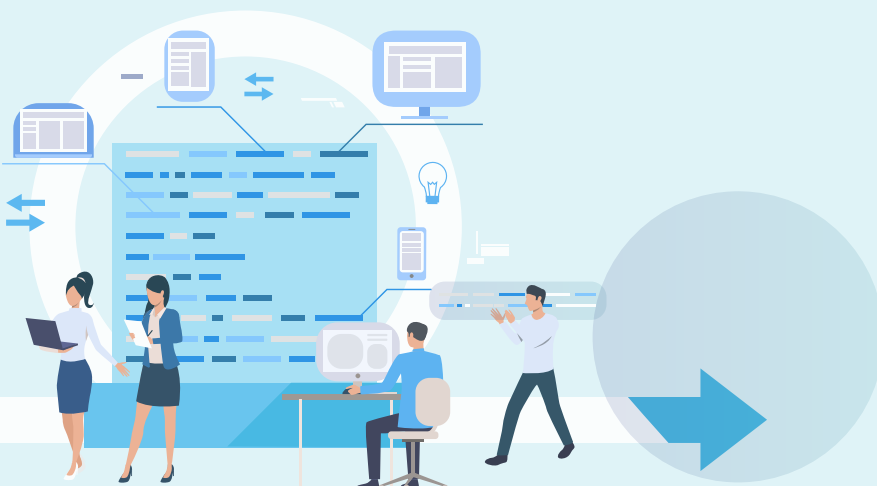
The Naukri JobSpeak is a monthly Index that calculates and records hiring activity based on the job listings on Naukri.com website month on month. The objective of Naukri JobSpeak is to measure the hiring activities in various industries, cities, functional areas and experience levels. The data is compiled from the website wherein jobs posted by clients on Naukri.com are considered. Thus, the job speak index includes jobs that might be for replacement hiring. July 2008 is taken to be the base with an index value of 1,000 and the subsequent monthly index is compared with the data for July 2008. The jobs analyzed for the monthly Index are qualified based on white-collar, urban, belonging to organized corporate sector jobs with the focus on service industries. The report shows hiring trends across industry sectors, geography, experience level, and functional areas. More than 76,000 clients use Naukri.com, leading to the high reliability of data. The report does not cover gig employment, hyperlocal hiring or campus placement. Over a long period, the Naukri JobSpeak was impacted by the increase in the Naukri traffic share, internet penetration, Naukri pricing strategy and job listing drives.

About Naukri.com

Naukri.com, India's No. 1 job site and the flagship brand of Info Edge introduced the concept of e-recruitment in India. Since its inception in 1997, Naukri.com has seen continuous growth while outperforming its competitors in every sphere. Info Edge was the first internet company to be listed in India. The brand enjoys a timeshare of over 96% across Desktop, Mobile and App as per similar web. Naukri.com is a recruitment platform that provides hiring-related services to corporates/recruiters, placement agencies and job seekers in India and overseas. It offers multiple products like Resume Database Access, listings and Response Management Tools. With more than 5,40,000 jobs live at any point and over 69 million CVs, Naukri.com services over 59,500 unique clients. The company operates 77 offices in 47 cities in India and overseas offices in Dubai, Riyadh, Abu Dhabi, Qatar and Bahrain.

Disclaimer

The data is only representative of the listings on Naukri.com. Our analytics team has used statistical techniques to derive insights which might be useful for our users/stake holders/ audiences. There may be a statistical margin of error.



ANNEXURE

SECTORAL DATA

Industry*	May-20	Jun-20	Jul-20	Aug-20	Sep-20	Oct-20	Nov-20	Dec-20	Jan-21	Feb-21	Mar-21	Apr-21	May-21
IT-Software/Software Services	1472	1755	1749	1986	2375	2533	2779	3081	2976	3944	4376	3859	4409
BPO/ITES/CRM/Transcription	839	1244	1315	1527	1971	1878	1791	1819	1875	2184	2201	1838	1655
Construction/Engineering/Cement/ Auto/Auto Ancillary	282	374	475	490	583	583	555	663	651	683	647	553	490
Banking/Financial Services/Broking	858	1192	1378	1437	1910	1832	1772	2088	2182	2544	2565	1896	1617
Oil and Gas/Power/Infrastructure	249	300	347	313	408	386	332	431	393	443	475	411	306
Telcom/ISP	300	285	322	507	470	349	350	439	405	503	526	445	499
Insurance	476	637	659	795	1017	910	759	1100	1193	1176	893	849	863
Industrial Products/Heavy Machinery	351	546	695	773	1041	967	835	1036	951	1081	1128	965	799
Pharma/Biotech/Clinical Research	1125	1426	1316	1243	1794	1494	1477	1885	1679	1816	1814	1657	1610
Hotels/Restaurants/Airlines/Travel	207	430	407	417	616	818	738	826	858	1015	932	597	350
FMCG/Foods/Beverage	700	1103	1209	1227	1754	1591	1404	1701	1627	1950	1751	1487	1300
Chemicals/PetroChemical/Plastic/ Education/Teaching/Training	487	815	939	937	1439	1246	1018	1356	1176	1260	1196	1134	892
IT-Hardware & Networking	558	764	835	829	1354	1055	949	1050	1024	1209	1258	1073	898
Retailing	308	545	532	813	935	1051	981	1084	1158	1219	1406	939	747
Media/Dotcom/Entertainment	438	420	572	589	816	758	637	596	712	847	754	661	338
Medical/Healthcare/Hospital	4060	4499	4612	5279	5091	4866	5044	5736	4788	6133	6275	5656	4313
Real Estate/Property	594	947	1021	1364	1963	1983	1939	2068	2345	2661	2438	1754	1322
Recruitment/Employment Firm	833	1303	1782	2127	3122	2798	2683	3012	3364	3894	4276	3675	3137
Consumer Durables	352	595	671	641	808	842	777	902	975	1124	930	797	580
Accounting/Taxation/Finance	1092	1668	1834	2036	2510	2480	2357	2688	2564	2918	3093	2477	1641
Advertising/PR/MR/Events	1036	1366	1481	1707	1979	2256	2039	2230	2258	2673	2725	2079	1626
Textiles/Garments/Accessories	583	967	1093	1236	1336	1488	1508	1784	1591	1706	1678	1479	1221
Semiconductors/Electronics	855	865	1012	1245	1128	1441	1278	1581	1569	1679	1571	1761	2463
Courier/Transportation/Freight	647	1036	1395	1505	1954	1652	1601	1531	1518	1934	2118	1533	1348
Architecture/Interior Designing	606	818	750	1151	1452	1508	1384	1749	1696	2135	2202	1604	974
Export/Import	410	663	1183	796	1086	1226	1175	1438	1349	1287	1229	938	831
Printing/Packaging	538	781	925	1021	1134	1082	943	1341	954	1527	1456	1164	752
Shipping/Marine	245	387	360	512	874	920	633	627	690	600	597	640	534
Agriculture/Dairy	891	1537	1931	1819	2333	2243	1793	2192	1940	2303	2519	1836	1534
Office Equipment/Automation	262	353	406	411	624	524	480	673	648	794	925	654	1044
Fresher/Trainee	416	1005	1113	1365	2040	1818	1587	2604	1974	1832	1388	1127	349
NGO/Social Services	838	1217	1320	1242	1870	1987	1679	2129	2243	2475	2860	1672	1803
Gems & Jewellery	954	1700	1934	2612	3750	4144	3426	4445	3616	4421	4709	3205	2888
Paper	402	649	578	465	519	377	493	578	389	751	540	377	276
Legal	1083	2039	2241	1811	2407	2226	2116	2434	2686	3318	2909	3068	2627
Tyres	178	475	519	371	552	460	567	401	564	855	890	629	223
Fertilizers/Pesticides	846	1380	1751	1781	1748	1855	1901	1959	2567	2612	2330	1748	2983
Security/Law Enforcement	707	1669	1796	1886	1968	2322	1500	2104	1560	2088	2648	1856	1288
Defence/Government	1562	2770	3172	2239	2603	2845	1856	1796	1399	1523	1329	1278	1562

ANNEXURE

FUNCTIONAL AREA

Functional*	May-20	Jun-20	Jul-20	Aug-20	Sep-20	Oct-20	Nov-20	Dec-20	Jan-21	Feb-21	Mar-21	Apr-21	May-21
IT-Software	1388	1674	1763	1969	2416	2462	2718	2982	2907	3806	4184	3725	4264
Sales / BD	863	1147	1189	1280	1731	1837	1623	1945	2042	2225	2089	1597	1271
ITES / BPO / KPO / Customer Service	1153	1679	1673	1986	2452	2482	2220	2431	2367	2790	2801	2239	2058
Production / Maintenance / Quality	486	785	831	909	1168	1038	866	1081	979	1060	962	937	733
Accounts / Finance / Tax / CS / Audit	568	806	835	921	1169	1246	1104	1258	1272	1485	1556	1313	1126
HR / Administration / IR	570	747	756	892	1260	1236	1292	1580	1576	2014	2171	1745	1683
Site Engineering / Project Management	206	291	364	385	463	467	444	552	493	518	468	452	375
Marketing / Advertising / MR / PR	658	822	858	1030	1241	1241	1194	1384	1312	1576	1738	1280	1080
Banking / Insurance	526	648	1027	1111	1404	1294	1239	1463	1511	1810	1906	1487	1318
Engineering Design / R&D	381	507	606	548	708	718	635	802	722	851	787	851	725
Purchase / Logistics / Supply Chain	475	695	809	937	1160	1095	959	1177	1065	1262	1247	1136	979
Secretary / Front Office / Data Entry	263	435	505	536	773	716	683	875	812	966	890	642	387
IT- Hardware / Telecom / Technical	665	906	1216	1228	1843	1503	1434	1458	1288	1494	1624	1346	1226
Teaching / Education	1402	2093	1802	2060	2683	2160	2027	2572	3001	4464	3555	2427	2537
Pharma / Biotech / Healthcare	3636	4953	5183	5968	5648	5079	5093	6178	5061	6517	6590	5994	5009
Hotels / Restaurants	272	697	534	538	659	841	762	864	887	971	994	675	340
Top Management	476	596	536	581	729	575	942	738	659	663	657	568	589
Architecture / Interior Design	531	638	687	778	985	979	913	1066	1138	1329	1212	1168	639
Export / Import / Merchandising	414	762	895	1209	1000	1167	1053	1264	1134	1232	1309	947	1055
Corporate Planning / Consulting	623	840	783	1010	1265	1342	1134	1502	1496	1831	1817	1624	1593
Legal	644	918	917	970	1265	1177	1190	1400	1519	1648	1683	1505	1340
Web / Graphic Design / Visualiser	1749	2066	2373	3080	3241	3780	3471	4047	4260	4452	4530	3552	2901
Content / Journalism	1481	1936	1726	2188	2394	2604	2438	2604	2686	3486	3001	2558	2348
Ticketing / Travel / Airlines	279	517	721	732	1203	1622	795	1164	1053	1341	1280	1306	627
Fashion / Garments / Merchandising	152	410	402	641	898	968	952	1463	799	1156	939	1000	682
Guards / Security Services	531	1065	857	949	1339	1122	833	1326	745	960	1428	1022	724
TV / Films / Production	816	1097	1567	865	1148	1339	1097	1094	1110	1229	1126	1383	669
Packaging	889	1068	1161	1106	1462	1179	1143	1215	834	1264	1179	974	961