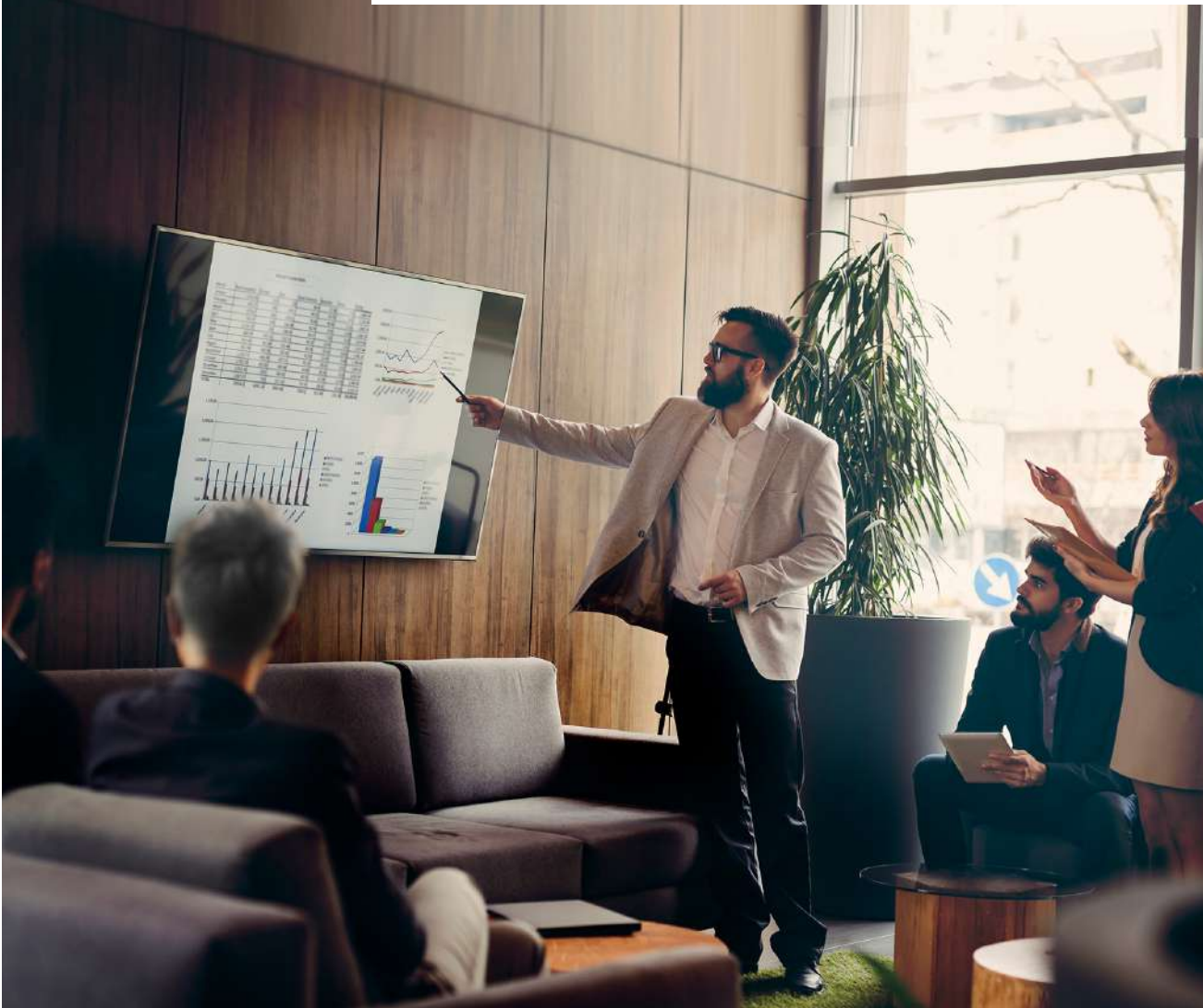


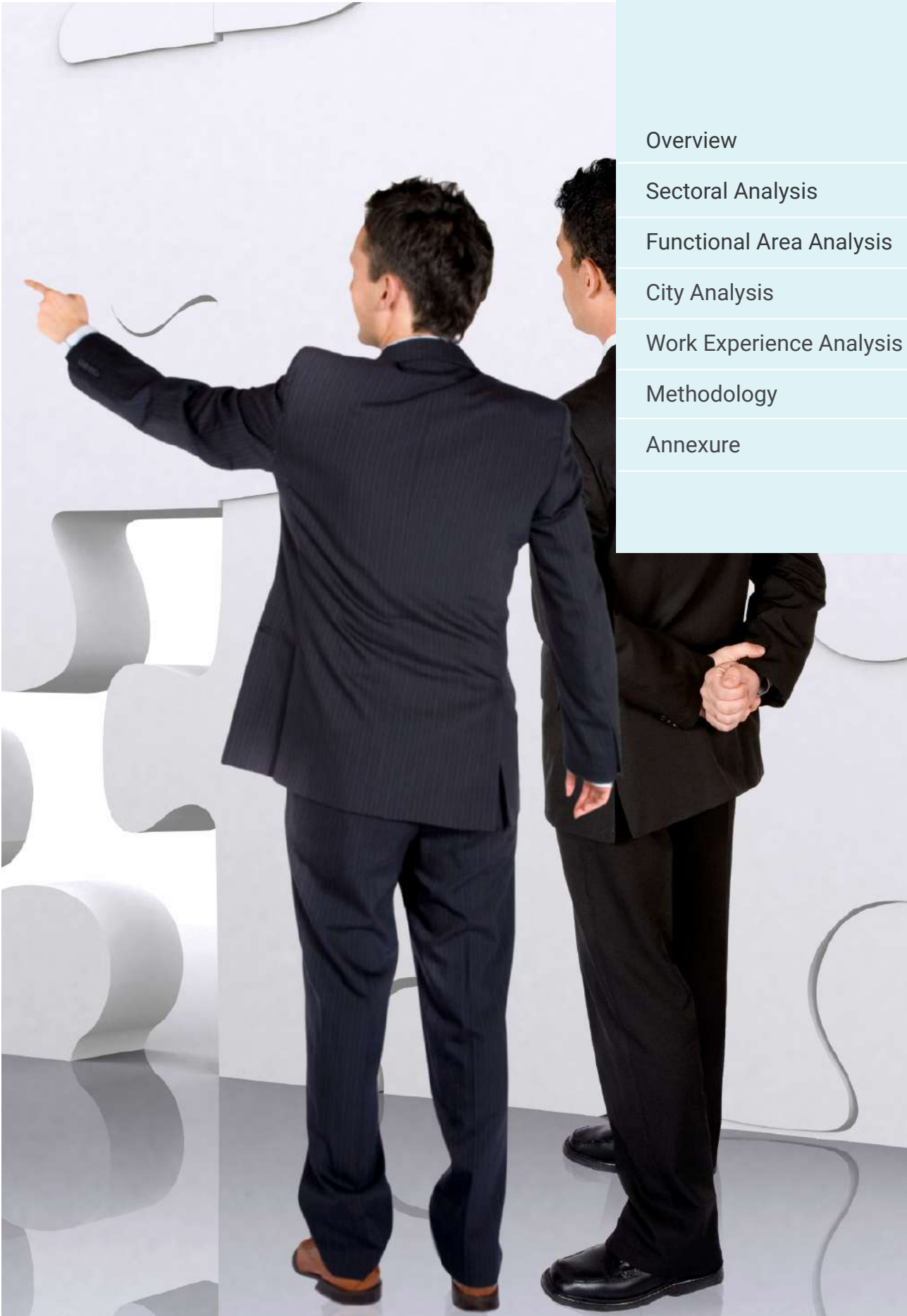
NAUKRI JOBSPEAK REPORT

Hiring Trends By City, Industry,
Functional Area and Experience



JULY 2021

TABLE OF CONTENTS

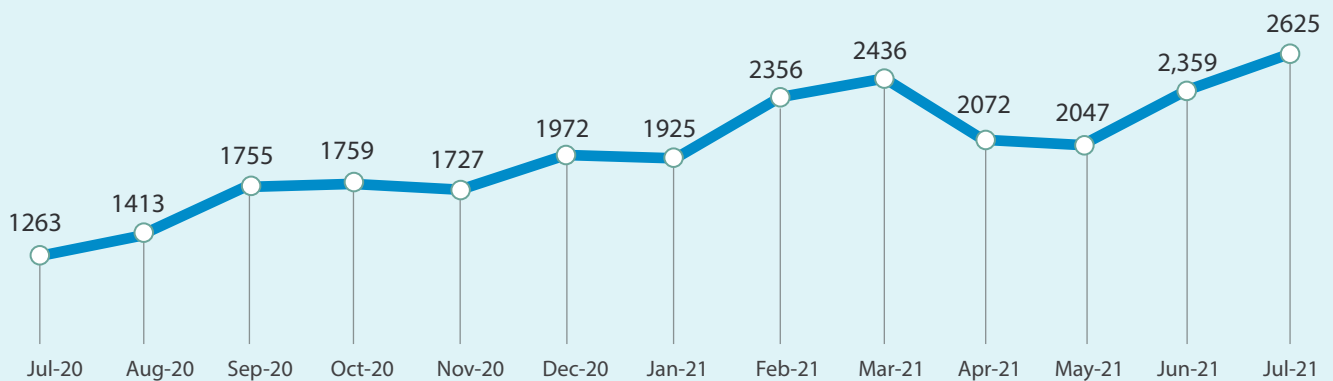


Overview	3
Sectoral Analysis	4
Functional Area Analysis	5
City Analysis	6
Work Experience Analysis	7
Methodology	8
Annexure	9-10

INDEX FOR JULY 2021

Hiring activity in India at all time high and surpasses pre-Covid levels; jobs grow by 11% in July'21 vs June'21: Naukri JobSpeak

Overall Hiring Trends



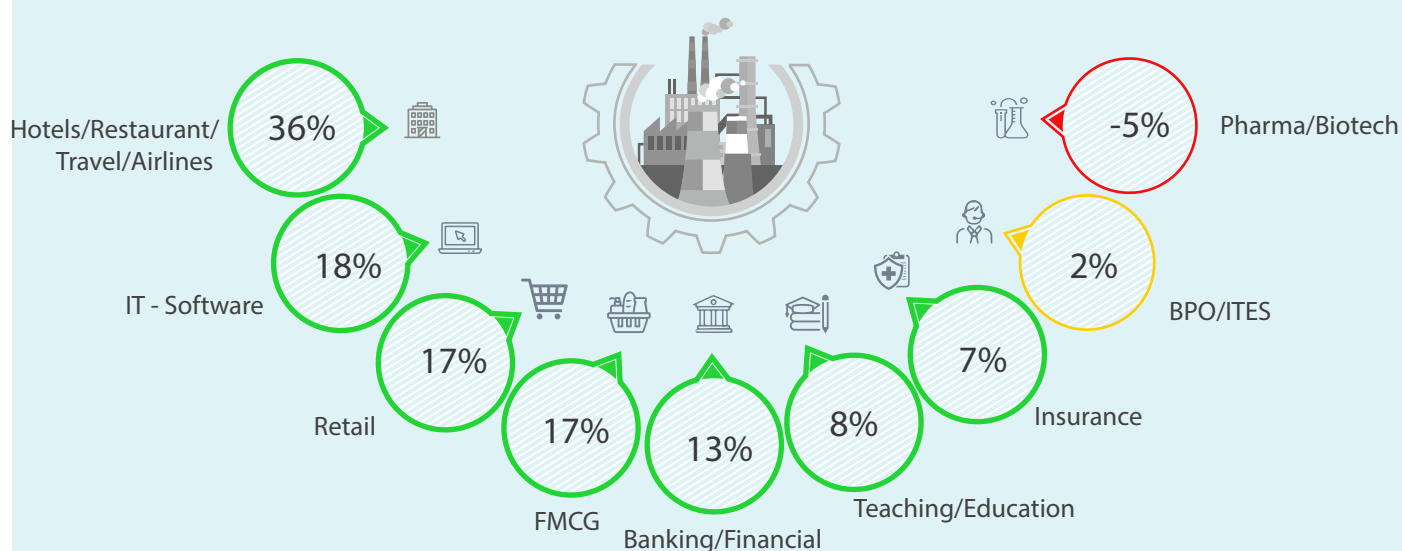
- The IT-Software/Software Services sector maintained its steady, upward growth with a 18% increase in July '21. The Hotels/Restaurants/Airlines/Travel (+36%) and Retail (+17%) sectors, which were severely hit by the movement restrictions during the pandemic continued to show growth for the second month in a row.
- Hiring activity in most IT hubs witnessed double digit growth. Metro and tier-II cities witnessed an average 12% and 8% growth respectively.
- Hiring data for all experience bands continues to remain positive. The freshers band of 0-3 yrs saw the highest growth at 14% in July'21.

Pawan Goyal, Chief Business Officer, Naukri.com said,

"July '21 has provided conclusive proof of the revival of hiring activity in the country, after a setback in April and May '21. Not only has it increased by 11% in this month, but the Naukri Jobspeak Index has reached an all time high in July '21, even surpassing pre-Covid levels. The most noteworthy and consistent growth over the last few months belongs to the IT/ITES sector and the tech functional area, which has stayed relatively insular to the effects of the pandemic. This demonstrates that digital transformation of Indian businesses is well underway and central to recovery efforts after the pandemic."

HIRING TRENDS ACROSS INDUSTRIES

- Almost all sectors registered positive growth in July '21, with the IT-Software/Software Services sector growing by 18%.
- Hiring activity in Accounting/Taxation (+27%), FMCG (+17%), Banking/Financial Services (+13%) and Education/Teaching (+8%) saw positive sequential upswing in July'21 vs June'21. The Hotels/Restaurants/Airlines/Travel (+36%) and Retail (+17%) continued their recent good run.
- The Pharma/Biotech/Clinical Research sector saw a marginal drop of 5% in jobs while the Media/Dotcom/Entertainment sector dropped by 15% in the month of July '21.

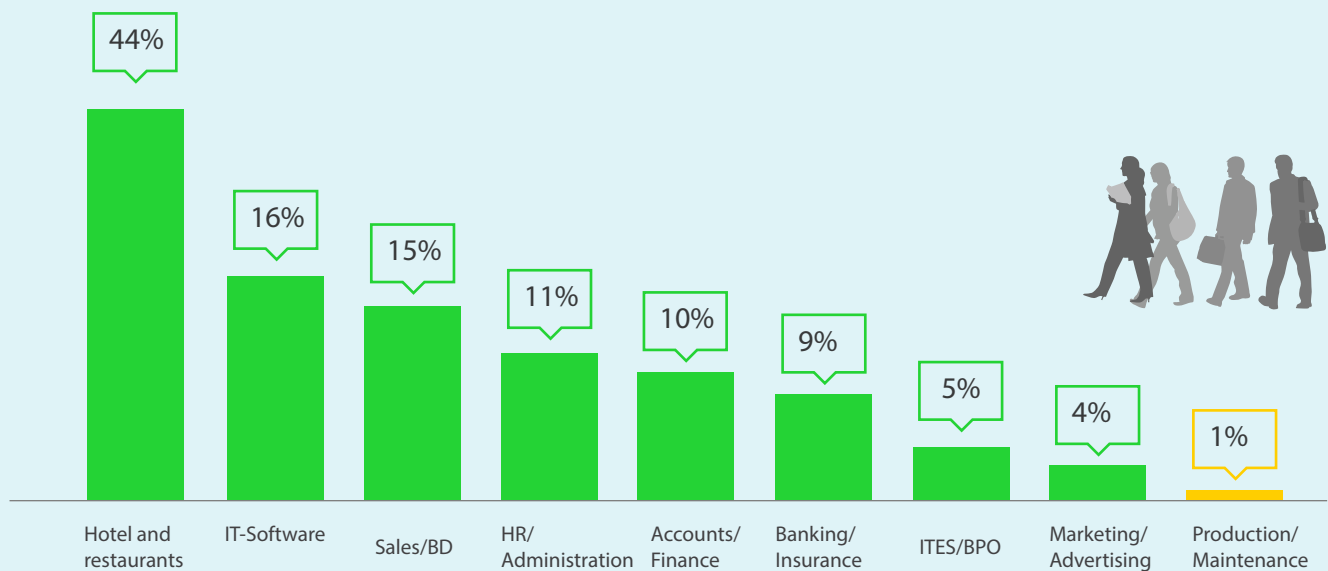


Figures are percentage change in Jul-21 over average of Jun-21

Industry*	Jul-20	Jan-21	Feb-21	Mar-21	Apr-21	May-21	Jun-21	Jul-21	Y-O-Y Growth	M-O-M Growth
IT-Software/Software Services	1749	2976	3944	4376	3859	4409	4624	5466	↑ 212%	↑ 18%
BPO/ITES/CRM/Transcription	1315	1875	2184	2201	1838	1655	1891	1923	↑ 46%	→ 2%
Auto/Auto Ancillary	661	934	1040	1009	835	682	806	885	↑ 34%	↑ 10%
Banking/Financial Services/Broking	1378	2182	2544	2565	1896	1617	2080	2340	↑ 70%	↑ 13%
Oil and Gas/Power/Infrastructure/Energy	347	393	443	475	411	306	360	394	↑ 13%	↑ 9%
Telcom/ISP	322	405	503	526	445	499	637	562	↑ 75%	↓ -12%
Insurance	659	1193	1176	893	849	863	1190	1278	↑ 94%	↑ 7%
Pharma/Biotech/Clinical Research	1316	1679	1816	1814	1657	1610	1970	1869	↑ 42%	↓ -5%
Hotels/Restaurants/Airlines/Travel	407	858	1015	932	597	350	654	887	↑ 118%	↑ 36%
FMCG/Foods/Beverage	1209	1627	1950	1751	1487	1300	1592	1864	↑ 54%	↑ 17%
Education/Teaching/Training	2118	3640	4558	3984	3040	3244	3741	4030	↑ 90%	↑ 8%
IT-Hardware & Networking	835	1024	1209	1258	1073	898	1262	785	↓ -6%	↓ -38%
Retailing	532	1158	1219	1406	939	747	1169	1366	↑ 157%	↑ 17%
Medical/Healthcare/Hospital	4612	4788	6133	6275	5656	4313	5671	5663	↑ 23%	→ 0%

HIRING TRENDS ACROSS FUNCTIONAL AREAS

- Sectors like Hospitality (+44%) and Travel (+42%) bounced back in July'21 and Sales/BD (+15%), HR/Administration (+11%) and Accounts/Finance (+10%) also saw a sequential rise in hiring activity in the last one month.
- The Naukri JobSpeak index reports a 16% increase in demand for tech professionals, building on the 4% growth shown in June'21.
- The Naukri JobSpeak index for July'21 reports 9% and 4% growth in the Banking/Insurance and Teaching/Education roles respectively.



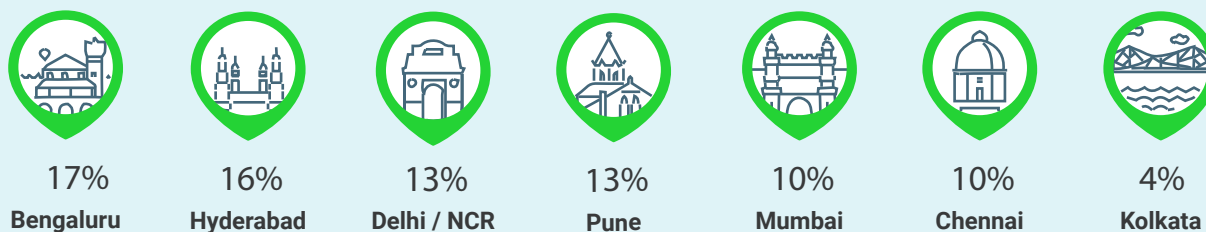
Figures are percentage change in Jul-21 over average of Jun-21

Functional Area*	Jul-20	Jan-21	Feb-21	Mar-21	Apr-21	May-21	Jun-21	Jul-21	Y-O-Y Growth	M-O-M Growth
IT-Software	1763	2907	3806	4184	3725	4264	4430	5144	↑ 192%	↑ 16%
Sales / BD	1189	2042	2225	2089	1597	1271	1683	1934	↑ 63%	↑ 15%
ITES / BPO / KPO / Customer Service / Operations	1673	2367	2790	2801	2239	2058	2360	2471	↑ 48%	↑ 5%
Production / Maintenance / Quality	831	979	1060	962	937	733	893	904	↑ 9%	→ 1%
Accounts / Finance / Tax / CS / Audit	835	1272	1485	1556	1313	1126	1356	1490	↑ 78%	↑ 10%
HR / Administration / IR	756	1576	2014	2171	1745	1683	2199	2447	↑ 224%	↑ 11%
Site Engineering / Project Management	364	493	518	468	452	375	472	516	↑ 42%	↑ 9%
Marketing / Advertising / MR / PR	858	1312	1576	1738	1280	1080	1501	1555	↑ 81%	↑ 4%
Banking / Insurance	1027	1511	1810	1906	1487	1318	1729	1887	↑ 84%	↑ 9%
Purchase / Logistics / Supply Chain	809	1065	1262	1247	1136	979	1261	1270	↑ 57%	→ 1%
IT- Hardware / Telecom / Technical Staff / Support	1216	1288	1494	1624	1346	1226	1628	1619	↑ 33%	→ -1%
Teaching / Education	1802	3001	4464	3555	2427	2537	2755	2865	↑ 59%	↑ 4%
Pharma / Biotech / Healthcare / Medical / R&D	5183	5061	6517	6590	5994	5009	6673	6440	↑ 24%	↓ -3%
Hotels / Restaurants	534	887	971	994	675	340	591	851	↑ 59%	↑ 44%

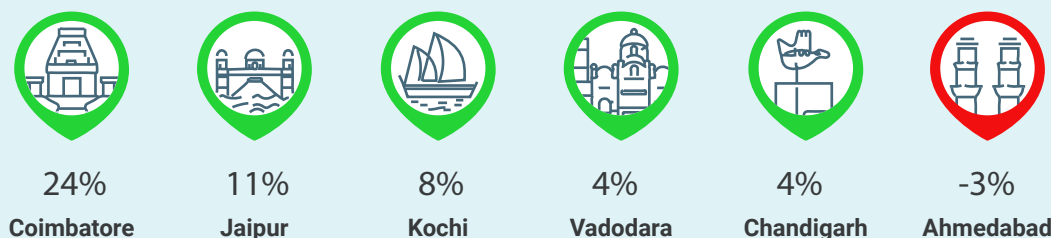
HIRING TRENDS ACROSS CITIES

- Prominent IT hubs such as Bengaluru (+17%), Hyderabad (+16%) and Pune (+13%) witnessed double digit growth in hiring during July'21 vs June'21.
- India's mega cities Delhi/NCR (+13%) and Mumbai (+10%) also kept up with similar growth, while hiring in Chennai and Kolkata grew at 10% and 4% respectively.
- Among the smaller cities, Coimbatore (+24%) and Jaipur (+11%) clocked positive growth while Ahmedabad (-3%) was the only city to record negative numbers in the month of July'21.

Metro Cities



Emerging Cities

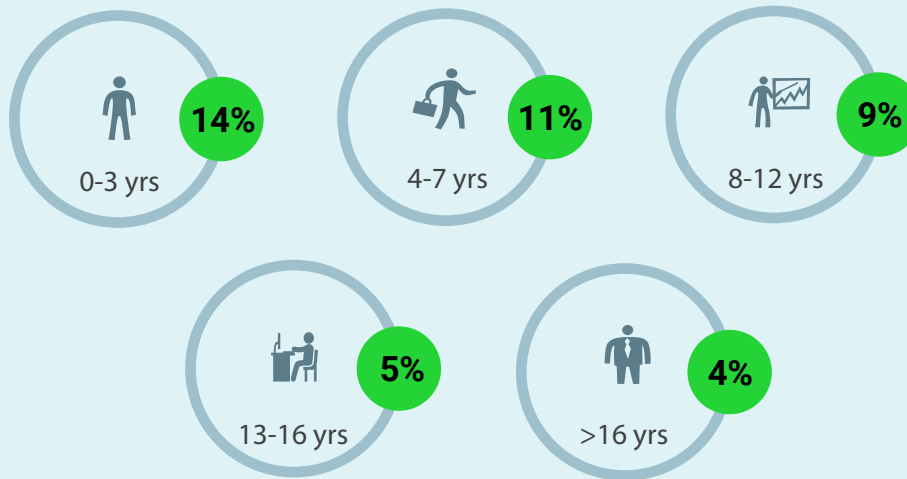


Figures are percentage change in Jul-21 over average of Jun-21

City*	Jul-20	Jan-21	Feb-21	Mar-21	Apr-21	May-21	Jun-21	Jul-21	Y-O-Y Growth	M-O-M Growth
Delhi / NCR	1170	1876	2258	2332	1913	1708	2158	2434	↑ 108%	↑ 13%
Mumbai	846	1257	1502	1618	1289	1355	1553	1715	↑ 103%	↑ 10%
Bengaluru / Bangalore	1228	2099	2743	3102	2783	3043	3177	3710	↑ 202%	↑ 17%
Chennai	892	1520	1834	1952	1765	1767	2006	2197	↑ 146%	↑ 10%
Hyderabad / Secunderabad	1396	2357	3020	3235	3097	3217	3527	4087	↑ 193%	↑ 16%
Pune	1417	2543	3149	3253	2907	3252	3588	4054	↑ 186%	↑ 13%
Kolkata	1431	2335	2604	2514	2525	2356	2925	3042	↑ 112%	↑ 4%
Ahmedabad	1783	2669	3487	3924	3469	3532	4483	4368	↑ 145%	↓ -3%
Chandigarh	1512	2032	2139	2246	1739	1835	2172	2264	↑ 50%	↑ 4%
Ernakulam / Kochi / Cochin	2589	3575	3797	3825	3652	3416	3619	3892	↑ 50%	↑ 8%
Vadodara / Baroda	1824	2160	2595	2544	2115	1933	2484	2593	↑ 42%	↑ 4%
Coimbatore	1740	2074	2359	2509	2071	1962	2164	2676	↑ 54%	↑ 24%
Jaipur	3124	3691	3863	3909	2951	2390	3597	3991	↑ 28%	↑ 11%

HIRING TRENDS ACROSS EXPERIENCE LEVELS

- Hiring data for all experience bands continues to remain positive. The freshers band of 0-3 yrs saw the highest growth at 14% in July'21.
- Senior professionals belonging to the 4-7 years (+11%), 8-12 years (+9%), 13-16 years (+5%) and 16+ years (+4%) categories also witnessed an increased demand in July'21.



Figures are percentage change in Jul-21 over average of Jun-21



METHODOLOGY

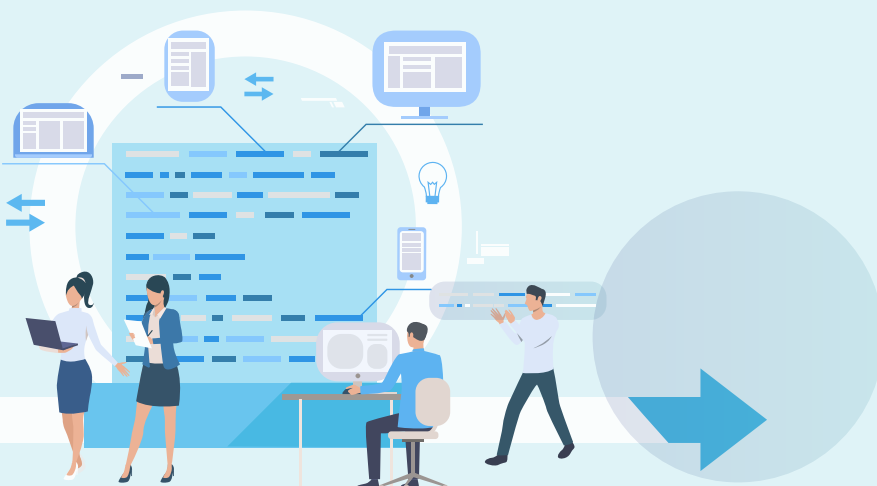
The Naukri JobSpeak is a monthly Index that calculates and records hiring activity based on the job listings on Naukri.com website month on month. The objective of Naukri JobSpeak is to measure the hiring activities in various industries, cities, functional areas and experience levels. The data is compiled from the website wherein jobs posted by clients on Naukri.com are considered. Thus, the job speak index includes jobs that might be for replacement hiring. July 2008 is taken to be the base with an index value of 1,000 and the subsequent monthly index is compared with the data for July 2008. The jobs analyzed for the monthly Index are qualified based on white-collar, urban, belonging to organized corporate sector jobs with the focus on service industries. The report shows hiring trends across industry sectors, geography, experience level, and functional areas. More than 76,000 clients use Naukri.com, leading to the high reliability of data. The report does not cover gig employment, hyperlocal hiring or campus placement. Over a long period, the Naukri JobSpeak was impacted by the increase in the Naukri traffic share, internet penetration, Naukri pricing strategy and job listing drives.

About Naukri.com

Naukri.com, India's No. 1 job site and the flagship brand of Info Edge introduced the concept of e-recruitment in India. Since its inception in 1997, Naukri.com has seen continuous growth while outperforming its competitors in every sphere. Info Edge was the first internet company to be listed in India. The brand enjoys a timeshare of over 96% across Desktop, Mobile and App as per similar web. Naukri.com is a recruitment platform that provides hiring-related services to corporates/recruiters, placement agencies and job seekers in India and overseas. It offers multiple products like Resume Database Access, listings and Response Management Tools. With more than 5,40,000 jobs live at any point and over 69 million CVs, Naukri.com services over 59,500 unique clients. The company operates 77 offices in 47 cities in India and overseas offices in Dubai, Riyadh, Abu Dhabi, Qatar and Bahrain.

Disclaimer

The data is only representative of the listings on Naukri.com. Our analytics team has used statistical techniques to derive insights which might be useful for our users/stake holders/ audiences. There may be a statistical margin of error.



ANNEXURE

SECTORAL DATA

Industry*	Jul-20	Aug-20	Sept-20	Oct-20	Nov-20	Dec-20	Jan-21	Feb-21	Mar-21	Apr-21	May-21	Jun-21	Jul-21
IT-Software/Software Services	1749	1986	2375	2533	2779	3081	2976	3944	4376	3859	4409	4624	5466
BPO/ITES/CRM/Transcription	1315	1527	1971	1878	1791	1819	1875	2184	2201	1838	1655	1891	1923
Construction/Engineering/Cement/Metals	475	490	583	583	555	663	651	683	647	553	490	658	667
Auto/Auto Ancillary	661	771	994	985	820	1088	934	1040	1009	835	682	806	885
Banking/Financial Services/Broking	1378	1437	1910	1832	1772	2088	2182	2544	2565	1896	1617	2080	2340
Oil and Gas/Power/Infrastructure/Energy	347	313	408	386	332	431	393	443	475	411	306	360	394
Telcom/ISP	322	507	470	349	350	439	405	503	526	445	499	637	562
Insurance	659	795	1017	910	759	1100	1193	1176	893	849	863	1190	1278
Industrial Products/Heavy Machinery	695	773	1041	967	835	1036	951	1081	1128	965	799	998	1088
Pharma/Biotech/Clinical Research	1316	1243	1794	1494	1477	1885	1679	1816	1814	1657	1610	1970	1869
Hotels/Restaurants/Airlines/Travel	407	417	616	818	738	826	858	1015	932	597	350	654	887
FMCG/Foods/Beverage	1209	1227	1754	1591	1404	1701	1627	1950	1751	1487	1300	1592	1864
Chemicals/PetroChemical/Plastic/Rubber	939	937	1439	1246	1018	1356	1176	1260	1196	1134	892	1077	1057
Education/Teaching/Training	2118	2312	3258	3234	2697	3279	3640	4558	3984	3040	3244	3741	4030
IT-Hardware & Networking	835	829	1354	1055	949	1050	1024	1209	1258	1073	898	1262	785
Retailing	532	813	935	1051	981	1084	1158	1219	1406	939	747	1169	1366
Media/Dotcom/Entertainment	572	589	816	758	637	596	712	847	754	661	338	269	228
Medical/Healthcare/Hospital	4612	5279	5091	4866	5044	5736	4788	6133	6275	5656	4313	5671	5663
Real Estate/Property	1021	1364	1963	1983	1939	2068	2345	2661	2438	1754	1322	2105	2645
Recruitment/Employment Firm	1782	2127	3122	2798	2683	3012	3364	3894	4276	3675	3137	3839	4341
Consumer Durables	671	641	808	842	777	902	975	1124	930	797	580	746	937
Accounting/Taxation/Finance	1834	2036	2510	2480	2357	2688	2564	2918	3093	2477	1641	2017	2551
Advertising/PR/MR/Events	1481	1707	1979	2256	2039	2230	2258	2673	2725	2079	1626	2243	2571
Textiles/Garments/Accessories	1093	1236	1336	1488	1508	1784	1591	1706	1678	1479	1221	1716	1824
Semiconductors/Electronics	1012	1245	1128	1441	1278	1581	1569	1679	1571	1761	2463	3351	3377
Courier/Transportation/Freight	1395	1505	1954	1652	1601	1531	1518	1934	2118	1533	1348	1869	2008
Architecture/Interior Designing	750	1151	1452	1508	1384	1749	1696	2135	2202	1604	974	1349	1787
Export/Import	1183	796	1086	1226	1175	1438	1349	1287	1229	938	831	1317	1237
Printing/Packaging	925	1021	1134	1082	943	1341	954	1527	1456	1164	752	959	986
Shipping/Marine	360	512	874	920	633	627	690	600	597	640	534	682	664
Agriculture/Dairy	1931	1819	2333	2243	1793	2192	1940	2303	2519	1836	1534	1923	1819
Office Equipment/Automation	406	411	624	524	480	673	648	794	925	654	1044	1170	1415
Fresher/Trainee	1113	1365	2040	1818	1587	2604	1974	1832	1388	1127	349	16	82
NGO/Social Services	1320	1242	1870	1987	1679	2129	2243	2475	2860	1672	1803	2317	2442
Gems & Jewellery	1934	2612	3750	4144	3426	4445	3616	4421	4709	3205	2888	2985	3830
Paper	578	465	519	377	493	578	389	751	540	377	276	713	603
Legal	2241	1811	2407	2226	2116	2434	2686	3318	2909	3068	2627	3189	3295
Tyres	519	371	552	460	567	401	564	855	890	629	223		
Fertilizers/Pesticides	1751	1781	1748	1855	1901	1959	2567	2612	2330	1748	2983	4310	3710
Security/Law Enforcement	1796	1886	1968	2322	1500	2104	1560	2088	2648	1856	1288	1500	2050
Defence/Government	3172	2239	2603	2845	1856	1796	1399	1523	1329	1278	1562	3591	3568

ANNEXURE

FUNCTIONAL AREA

Functional*	Jul-20	Aug-20	Sep-20	Oct-20	Nov-20	Dec-20	Jan-21	Feb-21	Mar-21	Apr-21	May-21	Jun-21	Jul-21
IT-Software	1763	1969	2416	2462	2718	2982	2907	3806	4184	3725	4264	4430	5144
Sales / BD	1189	1280	1731	1837	1623	1945	2042	2225	2089	1597	1271	1683	1934
ITES / BPO / KPO / Customer Service / Operations	1673	1986	2452	2482	2220	2431	2367	2790	2801	2239	2058	2360	2471
Production / Maintenance / Quality	831	909	1168	1038	866	1081	979	1060	962	937	733	893	904
Accounts / Finance / Tax / CS / Audit	835	921	1169	1246	1104	1258	1272	1485	1556	1313	1126	1356	1490
HR / Administration / IR	756	892	1260	1236	1292	1580	1576	2014	2171	1745	1683	2199	2447
Site Engineering / Project Management	364	385	463	467	444	552	493	518	468	452	375	472	516
Marketing / Advertising / MR / PR	858	1030	1241	1241	1194	1384	1312	1576	1738	1280	1080	1501	1555
Banking / Insurance	1027	1111	1404	1294	1239	1463	1511	1810	1906	1487	1318	1729	1887
Engineering Design / R&D	606	548	708	718	635	802	722	851	787	851	725	839	903
Purchase / Logistics / Supply Chain	809	937	1160	1095	959	1177	1065	1262	1247	1136	979	1261	1270
Secretary / Front Office / Data Entry	505	536	773	716	683	875	812	966	890	642	387	740	901
IT- Hardware / Telecom / Technical Staff / Support	1216	1228	1843	1503	1434	1458	1288	1494	1624	1346	1226	1628	1619
Teaching / Education	1802	2060	2683	2160	2027	2572	3001	4464	3555	2427	2537	2755	2865
Pharma / Biotech / Healthcare / Medical / R&D	5183	5968	5648	5079	5093	6178	5061	6517	6590	5994	5009	6673	6440
Hotels / Restaurants	534	538	659	841	762	864	887	971	994	675	340	591	851
Top Management	536	581	729	575	942	738	659	663	657	568	589	767	702
Architecture / Interior Design	687	778	985	979	913	1066	1138	1329	1212	1168	639	1796	1176
Export / Import / Merchandising	895	1209	1000	1167	1053	1264	1134	1232	1309	947	1055	1318	1294
Corporate Planning / Consulting	783	1010	1265	1342	1134	1502	1496	1831	1817	1624	1593	1921	2987
Legal	917	970	1265	1177	1190	1400	1519	1648	1683	1505	1340	1729	1771
Web / Graphic Design / Visualiser	2373	3080	3241	3780	3471	4047	4260	4452	4530	3552	2901	4149	4408
Content / Journalism	1726	2188	2394	2604	2438	2604	2686	3486	3001	2558	2348	2811	2927
Ticketing / Travel / Airlines	721	732	1203	1622	795	1164	1053	1341	1280	1306	627	1099	1559
Fashion / Garments / Merchandising	402	641	898	968	952	1463	799	1156	939	1000	682	1115	1452
Guards / Security Services	857	949	1339	1122	833	1326	745	960	1428	1022	724	833	1010
TV / Films / Production	1567	865	1148	1339	1097	1094	1110	1229	1126	1383	669	1939	1192
Packaging	1161	1106	1462	1179	1143	1215	834	1264	1179	974	961	1068	1233